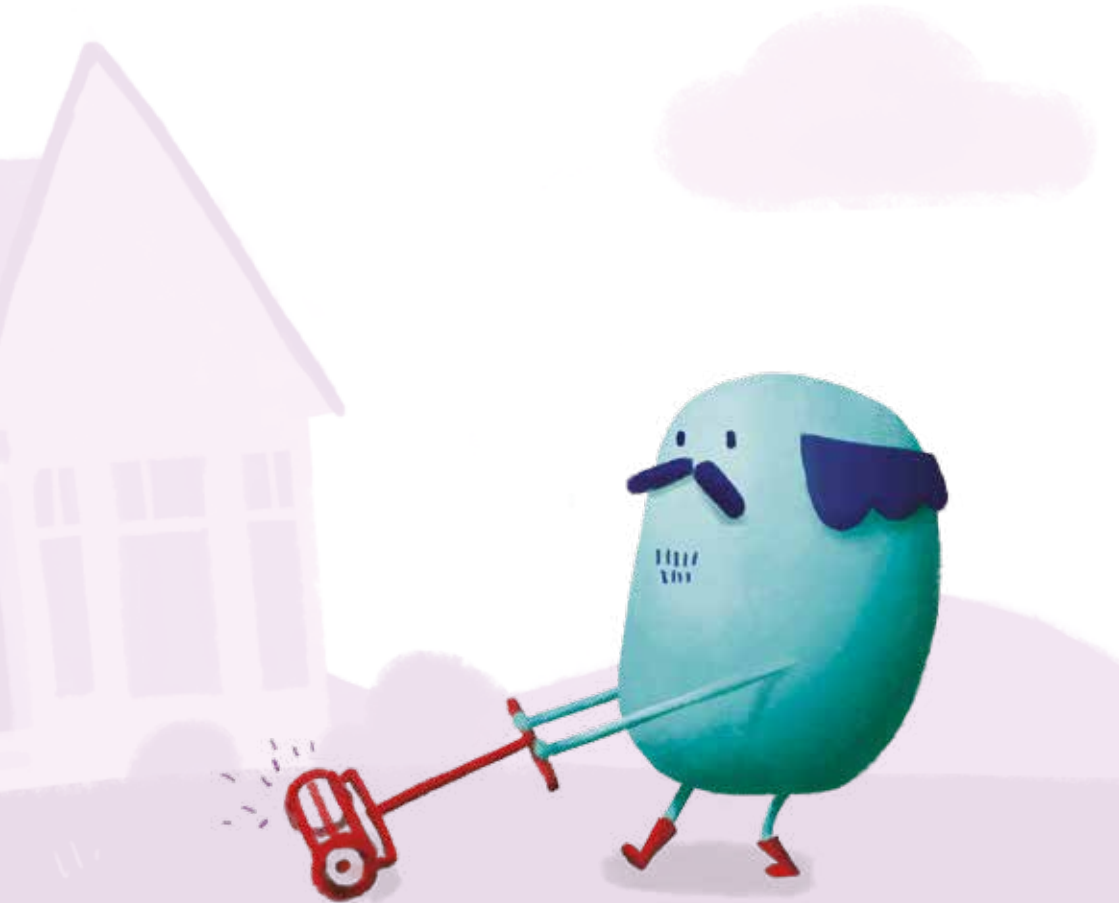


# Everyday Plus

## Home & Contents Insurance

Policy Document



**Warehouse  
Money**

# Table of contents

<b>1. Introduction</b>	<b>02</b>		
About your sum insured	04	Benefits that apply to both home and contents covers	29
Paying your premium	04	Legal liability	33
Your responsibilities	05	General exclusions	35
When you need to contact us	06		
<b>2. About your cover</b>	<b>07</b>	<b>3. Claims</b>	<b>42</b>
Who we cover – you/your	07	Making a claim	42
Where we cover – the insured address	07	Your excess	43
What we cover as your home	07	How we settle your claim	44
What we do not cover as your home	08	Home claims	46
The most we will pay for home claims	09	Contents claims	49
What we cover as your contents	10	Other claims information	50
What we do not cover as your contents	10	<b>4. Other important information</b>	<b>52</b>
The most we will pay for contents claims	11	What happens with cancellations?	52
GST	13	Words with special meanings	53
What you are covered for – loss or damage	13	How we will deal with a complaint	56
Benefits	13		
Benefits that apply only to your home cover	14		
Benefits that apply only to your contents cover	21		

# Important information at a glance

**This page is a useful guide for you. We recommend you read your policy carefully to understand what you are and are not covered for.**

## Features and benefits

- Cover for major events as well as accidental damage
- Up to 12 months temporary accommodation after an insured event
- SumExtra
- Damage to gardens and plants
- Replacement cover for your home and contents in most cases

## What this policy does...

Cover you for accidental loss/damage, theft, fire and your liability for damage to property.

## ...and does not do

Cover for wear and tear or electrical breakdown.

## Ways to save

- Increase your excess
- Pay annually

## Claims

- Ensure the safety of you and others first
- Take reasonable steps to prevent further loss
- Contact us as soon as possible

## Time to think it over

You have 21 days to change your mind after taking out this policy. If you have any queries during this time or you are uncertain about whether this policy is right for you, please contact us, we are only too happy to help.

## Handy tips

Review your sum insured after any major purchases or changes to your house.

Make sure your heaters are on timers, so if they are accidentally left on while you are out, they are less likely to cause any problems or run up a big power bill.



**Contact** View your policy documentation for contact information.

# 1.

# INTRODUCTION

## Welcome to Everyday Plus Home and Contents Insurance

### Why is this document important?

This policy document is an important legal document that contains details of *your* Everyday Plus Home and Contents Insurance *you* have purchased from *us*. *Your policy* comprises:

- › this policy document;
- › *your policy schedule* which shows the details particular to *you*;
- › the information *you* provided to *us* in *your* application or declaration;
- › any information *you* provide to *us* regarding any change in circumstances;

whether *you* have received or provided this information verbally, or have completed, accessed or received versions of these documents electronically or in printed form.

### Communicating with you

*You* agree we may send *your* policy documents and *policy* related communications electronically. This will be by email and/or other types of electronic communication methods. Policy documents and *policy*

communications will be provided to *you* in this way until *you* tell *us* otherwise or *we* tell *you* it is no longer suitable. In order to communicate with *you* electronically, *you* will need to provide *us* with *your* current email address and *your* New Zealand mobile phone number.

Each electronic communication will be deemed to be received by *you* at the time it leaves *our* information system.

### Cooling off period

After this insurance begins or *you* renew *your policy* for another *period of insurance*, *you* have **21** days to consider the information in *your* policy document. This is called the 'cooling off period'. If *you* wish, and provided *you* have not made a claim, *you* can exercise *your* cooling off rights by cancelling this *policy* within **21** days from the day cover began or was renewed. When *you* exercise *your* cooling off rights, we will refund in full the money *you* have paid for that *period of insurance* but *you* will have no cover from when *your policy* would have otherwise begun or from *your* renewal date.

## Your duty of disclosure

Before *you* enter into a *policy* with *us*, and at each renewal of the *policy*, *you* have a duty to disclose to *us* everything *you* know, or could reasonably be expected to know, which is or may be relevant or material to *our* decision to insure anyone under the *policy*, including *you*, and on what terms.

It includes matters *we* specifically ask about when *you* apply for a *policy*, or renew or alter *your policy*, but *you* are also obliged to disclose matters that *we* do not specifically ask *you* about if they may be relevant or material.

If *you* are unsure whether something is relevant, material or should be disclosed, it is better to tell *us*. If *you* do not tell *us* something relevant or material which *you* know or should know, *we* might reduce a claim, refuse to pay a claim, cancel *your policy*, or treat the *policy* as if it never existed.

## More than one named insured

If there is more than one named insured on *your policy schedule*, or where one of the named insureds is a trust, *we* will treat a statement, act, omission, claim, request or direction (including to alter or cancel *your policy* or to accept a settlement of a claim) made by one insured, including trustees, as a statement, act, omission, claim, request or direction by all those named as insured on *your policy schedule*.

## Where other insurance applies to your claim

This *policy* does not cover *loss or damage* or liability where cover is provided by other insurance. *We* will not contribute towards any claim made under any other policy.

## The law that governs this policy

This *policy* is governed by New Zealand law, and the New Zealand courts have exclusive jurisdiction over any legal proceedings about it.

## Other parties with an interest in your home or your contents

Where *we* are satisfied that there is a mortgage or secured financial interest over the *home* or the *contents*, *we* may make a claim payment under this *policy* to that interested party. This will meet *our* obligations under this *policy*.

Any party who is recorded under this *policy* as having an interest in the *home* or *contents* is not covered by this *policy* and has no right to make a claim. *We* will not advise any interested party of any changes to the *policy*, the property insured, or the extent or amount of cover.

## No assignment

*You* are not permitted to assign or to attempt to assign this *policy* or *your* interest in this *policy* to any other party. *You* must obtain *our* prior written consent before *you* assign or attempt to assign *your* rights to any claim proceeds to any other party.

## Sale and purchase

Where *you* have entered into a contract to sell *your home*, the purchaser of *your home* is covered under this *policy* until the time of settlement of the contract or when they take possession of the *home*, whichever occurs earlier. This cover is provided by virtue of the Insurance Law Reform Act 1985. All requirements and limitations in this *policy* apply to *you* and the purchaser as if *you* are insured jointly. Nothing in this section has the effect of extending a policy which has been cancelled or has not been renewed prior to the settlement of the contract or when the purchaser takes possession of the *home*.

## Some words in your policy have special meanings

Some words when used in this policy document have special meanings. Words with special meanings are defined in the 'Words with special meanings' section at the end of this policy document. Words with special meanings will appear in *italics* throughout this *policy*.

## Headings used in your policy

Where headings are used in this policy document the headings or references are purely descriptive in nature and are not to be used for interpretative purposes.

## ABOUT YOUR SUM INSURED

### What is a sum insured?

The sum insured is the most *you* can claim for any one *event* under one of the covers under this *policy* (either *home* or *contents*), unless stated otherwise in this policy document. The sum insured amount is shown on the *policy schedule* for the particular covers that *you* have purchased, and includes GST. *Your policy* also contains some benefits which are paid in addition to the sum insured under each or both of the *home* and *contents* sections of the *policy*. Where this applies, these benefit limits are specified in this policy document.

### Make sure your sum insured is adequate

Underinsurance can expose *you* to serious financial loss if a claim occurs. It is *your* responsibility to make sure *your home* and *contents* are insured for their full 'new for old' replacement value.

## Review your sum insured regularly

*You* need to ensure *your* sums insured are accurate. To ensure *your* sums insured are adequate it is important to review them regularly, being mindful of items purchased recently and ask *us* to change the sum insured when required.

### If you over-insure

We will not pay more than it costs *us* to rebuild, repair or replace *your home* or *contents*. We will not refund any premium paid for over-insuring.

### Adjustments on renewal

We may automatically adjust the *home sum insured* and *general contents sum insured* on *your policy schedule* at the end of each *period of insurance* to account for various factors that can influence the cost of rebuilding a home, or repairing or replacing items of *contents*. *You* are entirely responsible for ensuring that any adjusted sum insured is sufficient to cover *loss or damage to your home* and/or *contents*. Please ask *us* to change the sums insured for any items insured as *specified items* when required.

Where *you* sustained *loss or damage to your home* or *contents* in a previous *period of insurance*, any adjustment to *your* sums insured at renewal does not take account of the reduced amount of cover that applies until *your* repair, rebuild or replace *your home* or *contents*.

## PAYING YOUR PREMIUM

We will tell *you* how much *you* have to pay and how much time *you* have for payment in *our* correspondence with *you*. The total amount payable will be shown on *your policy* documentation or, if *you* pay by instalments, the fortnightly or monthly premium will be shown on *your policy* documentation, as the amount due. *You* must pay the premium by the

due date to get this insurance cover. *You* can pay in one annual payment or if we agree, by fortnightly or monthly instalments. Payment of *your* premium is a condition precedent to cover under this *policy*.

Unless we tell *you*, any payment reminder we send *you* does not change the expiry or due date.

If *you* make a change to *your policy* details it may affect the premium *you* need to pay or have paid for the remainder of *your period of insurance*.

If *you* do not pay the full amount, we may reduce the *period of insurance* so it is in line with the amount *you* paid.

## Late annual payments

If *you* do not pay *your* premium by the due date in the first year of insurance with us, we will give *you* a written notice of *policy* cancellation.

If *you* do not pay the premium due on renewal by the due date, *you* will have no cover from the due date.

If we accept *your* late payment, we might recommence *your* cover from the date we receive *your* payment. If so, *you* will have no cover for the period from the date that the payment was due until the date *you* make payment. However, any recommencement of cover will not extend the *policy* expiry date.

## Overdue instalments

If *you* pay *your* premium by instalments and *your* instalment is overdue, we can do one or both of the following:

- › refuse to pay a claim or provide any other benefit under this *policy* if an instalment is 14 days (or more) overdue;
- › cancel *your policy* without notifying *you* in advance if an instalment is 1 month (or more) overdue.

## YOUR RESPONSIBILITIES

### You must:

- › keep *your home* and contents well maintained and in good condition;
- › maintain locks or alarms in good working condition;
- › take all reasonable care to prevent theft, loss or damage or legal liability;
- › follow all the terms and responsibilities set out in *your policy*;
- › provide honest, accurate and complete information in relation to any claim, statement or document, including proposal, application, or declaration, supplied to us;
- › ensure that *your home* complies with local government or other statutory requirements at all times.

### Not meeting your responsibilities

If *you* do not meet *your* responsibilities, it may lead us to do one or both of the following:

- › reduce or refuse to pay *your* claim;
- › cancel *your* insurance *policy*.

### When your home will be unoccupied for more than 60 days

We will still cover *your home* if it is *unoccupied* provided that *you* ensure that its lawns and gardens are kept in a tidy condition, that all external doors and windows are kept locked, that all papers and mail are collected regularly and that *your home* is under regular supervision.

We will apply the unoccupied excess to each event covered by *your policy* if, at the time of the event, the *home* has been *unoccupied* for more than 60 continuous days.

A period of unoccupancy starts when the *home* becomes *unoccupied* and comes to an end when *you*, or someone nominated by *you*, has *occupied* the *home* for at least 2 consecutive nights. *You* may be asked to prove the occupancy of the *home* in the event of a claim. We will decide if the unoccupied excess applies.

If *you* have to pay an unoccupied excess it is payable in addition to any other excess that applies to *your* claim. For more details about the unoccupied excess see 'Your excess'.

## WHEN YOU NEED TO CONTACT US

### You must contact us when:

- › *you* start to operate or intend to operate a *business activity* at the *insured address*;
- › there are changes to any *business activity* *you* operate at the *insured address*, such as:
  - *you* change the type of *business activity*;
  - customers (whether paying or otherwise) or suppliers start to come to the *insured address*;
  - *you* install business signage;
  - *you* need to store chemicals for the *business activity*.
- › any detail on *your policy schedule* is no longer accurate;
- › *you* intend to demolish *your home*, have lodged an application to do this, or a government authority has issued a demolition order;
- › *you* move out and let *your home* to tenants;
- › trespassers (squatters) occupy *your home*;
- › *you* commence building or renovations at the *insured address*;
- › *you* or any person living at the *insured address* is convicted of a crime;
- › anything else happens that increases the chance that *loss or damage* will occur at the *insured address*;
- › *your* contact details change.

## What we will do when you contact us:

When *you* contact *us* and tell *us* about these changes, we may decide to impose an additional excess, charge an additional premium, apply a special condition to *your policy*, or a combination of these. In some cases, it could mean we can no longer insure *you* and we will cancel *your policy*.

## When moving house (for contents only)

When *you* are permanently changing your residential address within New Zealand, we will cover *your contents* for *loss or damage* caused by an *insured event* during the *period of insurance* at both *your insured address* and new address for up to 14 days from when any of *your contents* first arrive at the new address. The most we will pay for *your contents* in all locations is the *general contents sum insured*. All conditions, limits and exclusions of this *policy* apply to this cover.

*You* must contact *us* before the 14 days end and ask *us* to change *your insured address* if *you* want *contents* cover to continue.

Once *your contents* have been at *your new address* for 14 days all cover for *contents* under this *policy* ends unless *you* have contacted *us* to change *your insured address*, we have agreed to continue cover and *you* have paid *us* any extra premium we require.



# 2. ABOUT YOUR COVER

## WHO WE COVER – YOU/YOUR

You/your refers to the person or persons named as the insured on your *policy schedule* and members of your *family* who normally live with you at the *insured address* ('you').

If the insured shown on your *policy schedule* is a company, trustee of a trust or body corporate, then you/your refers to:

- › that company, trustee or body corporate;
- › the following if they normally live at the *insured address*:
  - any company director, company owner or trust beneficiary; and
  - their respective *family* members.

Family means:

- › your spouse, partner or de facto;
- › your parents, parents-in-law;
- › your children, brothers and sisters, including their respective spouse, partner or de facto; and
- › the children, parents, parents-in-law, brothers and sisters of your spouse, partner or de facto.

## WHERE WE COVER – THE INSURED ADDRESS

We cover your home and/or contents at the insured address, and your contents whilst temporarily removed from the insured address anywhere in New Zealand. The insured address is the address/location within New Zealand that is shown on your *policy schedule* ('insured address'). The insured address does not include *common property* unless the benefit 'Contents on common property' applies.

## WHAT WE COVER AS YOUR HOME

Where you have purchased cover for your home and this is shown on your *policy schedule*, we cover your home that you own, that you use primarily for domestic purposes within the *residential boundaries*. Your home also includes the following items that are owned by you, used for domestic purposes and located within the *residential boundaries* at the *insured address* ('home'):

- › each additional self-contained dwelling unit that is capable of being lived in and is intended by you to be, or actually is, the home of one or more persons, if your *policy schedule* specifically indicates that the home includes additional dwelling units;

- › separate outbuildings that are not self-contained and/or not capable of being lived in;
- › fixed floor coverings (glued, tacked or smooth-edged);
- › garages, carports, outdoor walls (but not *retaining walls*), gates, fences (limits apply, see 'The most we will pay for home claims');
- › decks, pergolas, pagodas, verandas and balconies, patios, fixed water tanks, fixed swimming pools and spas and their accessories, sheds, tennis courts;
- › garden borders, pathways and paved or concreted floor areas;
- › driveways (limits apply, see 'The most we will pay for home claims');
- › sealed roads and access ways including private roads, lanes, right-of-ways, access ways or bridges (including associated guttering, drains, piping, cables and lighting) providing access to a driveway owned by *you* or shared by *you* with other property owners, and for which *you* are responsible (limits apply, see 'The most we will pay for home claims');
- › drains, pipes and cables;
- › services, both above and below ground that are *your* property and *you* are responsible for;
- › any permanently housed, connected or wired electrical appliances;
- › any permanently fixed outdoor items, including solar panels, satellite dishes, play equipment, clothes lines, animal housing, letter boxes, exterior blinds and awnings, built in barbeques and outdoor lights;
- › sculptures and artwork that are permanently affixed to the home and/or land;
- › gas appliances permanently plumbed to a gas supply;
- › any permanently attached *fixtures and fittings* including wall, ceiling and floor coverings;
- › water tanks, sewer storage tanks or treatment tanks permanently plumbed to *your* home;

- › *your* share in any walls (except *retaining walls*), fences, gates, pipes, cables or driveways where those things are jointly owned by *you* and other property owners;
- › any uninstalled building *fixtures and fittings* and materials (limits apply, see 'The most we will pay for home claims') but only when kept in a locked and secured building at the *insured address*.

## WHAT WE DO NOT COVER AS YOUR HOME

Home does not include:

- › anything defined as *contents*;
- › any new building in the course of construction;
- › any part of the building used for farming of any description such as, but not limited to, a barn, dairy, shearing shed, silo or stable;
- › any temporary or mobile structures, including caravans, houseboats, watercraft or motorised vehicles or craft of any type;
- › inflatable or portable swimming pools and spas and their accessories;
- › any loosely laid carpets, rugs, blinds, drapes or curtains;
- › loose or compacted soil, lawn, artificial grass, gravel, pebbles, rocks or granular rubber;
- › used or applied chemicals, fertilisers or pesticides;
- › plants, trees and shrubs or hedges in the ground (unless covered under the benefit 'Damage to gardens and plants');
- › *retaining walls* (except the cover specifically provided under the benefit 'Retaining walls');
- › a hotel, motel, boarding or guest house;
- › wharves, piers, jetties, pontoons, any fixed or temporary dead weight moorings, mushroom moorings or screw in moorings, mooring poles and their attachments and accessories;
- › culverts, ponds, dams, slipways;
- › sea walls, flood walls and levees;
- › land, earth or fill.

## THE MOST WE WILL PAY FOR HOME CLAIMS

If we accept *your* claim, the most we will pay for *loss or damage* to the *home* for any one *insured event* is the *home sum insured* shown on *your policy schedule*, unless a different limit elsewhere in *your policy* or the 'SumExtra' benefit applies.

Some items also have fixed limits that cannot be increased and these limits are the most we will pay for those items as shown in the table below.

Fixed limits apply to	Limits for any one insured event
Uninstalled building <i>fixtures and fittings</i> , and materials but only when kept in a locked and secured building at the <i>insured address</i>	Up to \$1,000 in total
Fencing*	Up to 2 kilometres
Driveways*	Up to 100 metres
Sealed roads and access ways	Up to \$25,000 in total

\* Despite the distance limit shown, *our* payment for these items is still subject to, and does not increase, the *home sum insured* shown on *your policy schedule*.

## WHAT WE COVER AS YOUR CONTENTS

Where *you* have purchased cover for *your* contents, and this is shown on *your policy schedule*, we cover *your* household items that *you* own or are responsible for and use primarily for domestic purposes. We will call these items *your* contents. Contents are items which are not permanently attached to *your home* or *insured address* such as, but not limited to, furniture, furnishings, clothing, home computers and printers, unfixed electrical goods, internal blinds, drapes and curtains, loosely laid carpets, plants in pots, and medical equipment and aids.

The only vehicles, watercraft or aircraft that we deem to be contents are:

- › wheelchairs, mobility scooters, ride-on mowers, golf carts;
- › remote controlled scale model or toy motor vehicles;
- › surfboards, sailboards, kite surfing equipment, canoes, kayaks, non-motorised surf skis and motorised kontikis;
- › remote controlled scale model or toy watercraft; and
- › remote controlled scale model or toy aircraft, but not *drones*.

The only swimming pools, saunas and spas that we deem to be contents are those that are designed to be easily relocatable.

## If contents are located at a property and you are a tenant

When *you* are a tenant of a property, contents also include any items used primarily for domestic and residential purposes, which are permanently attached to the *insured address* and which *you* own.

## WHAT WE DO NOT COVER AS YOUR CONTENTS

Contents do not include:

- › anything defined as *home*, unless 'If contents are located at a property and you are a tenant' applies to *you*;
- › electrical or electronic items that are no longer able to be used for the purpose they were intended;
- › any pets or animals;
- › items that are or were stock or samples related to any *business activities*;
- › loose or compacted soil, lawn, artificial grass, gravel, pebbles, rocks, granular rubber or water;
- › plants, trees, shrubs or hedges in the ground;
- › used or applied chemicals, fertilisers and pesticides;
- › artificial body parts, surgical implants or attachments that are permanently fitted to *you* or to any animal;
- › *fixtures and fittings*, sculptures or artwork permanently affixed to the *home* or land;
- › contents used for *business activities* except *home office equipment* (limits apply), laptops, phones and similar handheld devices;
- › items sold, gifted away, no longer in *your* possession, or any item *you* have taken ownership or responsibility for, but *you* have not yet taken possession of;
- › contents normally housed in an address not named on the *policy schedule* (except where the benefit 'Visitors' contents' applies);
- › any vehicle not specifically included in 'What we cover as your contents' above;
- › vehicle accessories in or on a vehicle;
- › vehicle keys or vehicle remote controls;
- › entertainment and communication systems that are in or on a vehicle, including any parts that attach to these systems;

- › navigation systems or radar detectors in or on a vehicle, including any parts that attach to them;
- › any firearms for which *you* do not hold a licence, if one is required;
- › sporting, recreational and leisure goods and equipment whilst in use, but we will cover bicycles whilst in use, but not whilst being used for practicing for, or engaging in, racing or pace making;
- › *drones*.

## THE MOST WE WILL PAY FOR CONTENTS CLAIMS

### Different types of contents

There are different types of contents that can be covered under this *policy*. These are:

- › General *contents* – these include:
  - *Contents* without fixed limits;
  - *Contents* with fixed limits; and
  - *Contents* with flexible limits.
- › *Specified items* – for contents with flexible limits, *you* can increase their limits if we agree. If *you* increase the limit of such items and we agree, the items are listed on your *policy schedule* as '*Specified items*'.

## The most we will pay for contents claims

If we accept *your* claim the most we will pay for *loss or damage* to all *contents* arising from any one *insured event* is the *general contents sum insured*. This includes any *specified items*.

There are also limits that apply to individual *content* items or types of items. These limits are set out in the tables headed '*Contents with fixed limits*' and '*Contents with flexible limits*'.

### Contents without fixed limits

There is no item limit on the amount that we will pay for *contents* without fixed limits, however the *general contents sum insured* still limits the amount that we will pay for *loss or damage* from any one *insured event*.

## Contents with fixed limits

The following table lists *contents* that have fixed limits that cannot be changed and these limits are the most we will pay for those *contents* items.

Item	Limits for any one insured event
<i>Home office equipment</i> used for a <i>business activity</i>	Limited to <b>\$15,000</b> in total
<i>Tools of trade</i> and equipment used for a <i>business activity</i> (not <i>home office equipment</i> )	Limited to <b>\$2,000</b> in total
Cash, smart cards, phone cards, documents able to be cashed or traded, vouchers, money orders or stamps (not in a <i>set</i> or <i>collection</i> )	Limited to <b>\$400</b> in total
Uncut and unset gems, gold or silver nuggets, bullion and ingots (not jewellery)	Limited to <b>\$700</b> in total
Refrigerated food, frozen food and medicines	Limited to <b>\$1,000</b> in total

## Contents with flexible limits

The following table lists *contents* that have flexible limits, which *you* can ask *us* to increase. An additional premium may apply. If *you* have not asked *us* to increase the limit, the most we will pay is the limit shown for the item in the table below.

Item	Limits for any one insured event
Jewellery and watches	<b>\$2,500</b> per item or set up to a total of <b>\$10,000</b>
Carpet or rugs that are hand woven	<b>\$5,000</b> per carpet or rug
Paintings, pictures, works of art, antiques, sculptures, ornaments and art objects	<b>\$20,000</b> per item or set up to a total of <b>\$80,000</b>
<i>Collections, sets</i> and <i>memorabilia</i> , including stamps, stamp collections, collector's pins, medals and currency no longer in circulation	<b>\$5,000</b> in total for all <i>collections, sets</i> and <i>memorabilia</i>

If you find that the flexible limits detailed above are not high enough you can choose to tailor your cover to best suit your individual needs by choosing to specify individual items.

For example:

If you have a painting in your home that is valued at \$25,000, you would need to ask us to list that painting for \$25,000, and we must agree, in order for it to be covered to the value of \$25,000. Otherwise, in the event of a claim we will only pay up to \$20,000 for that painting as shown by the limit in the table above.

## The most we will pay for specified items

If you have asked us to increase the limit for a contents item of a type described in the table headed 'Contents with flexible limits' and we agree, that contents item will be insured for a specified value and the contents item will be shown on your policy schedule as a 'Specified item'. The most we will pay for a specified item is the amount shown on your policy schedule for that item.

## GST

Limits, excesses and the most we pay amounts stated in this policy document and on your policy schedule include GST.

## WHAT YOU ARE COVERED FOR – LOSS OR DAMAGE

You can choose to insure your home and contents, or just home or just contents. Your policy schedule will show what covers you have.

## Home cover

When you have home cover, your home is covered for loss or damage at the insured address during the period of insurance, subject to the conditions, limits and exclusions in this policy.

There are some things we do not cover and these are shown under the heading 'General exclusions'.

## Contents cover

When you have contents cover, your contents, including your jewellery and watches, are covered for loss or damage during the period of insurance, subject to the conditions, limits and exclusions in this policy. Your contents are covered within New Zealand for loss or damage at the insured address and while temporarily removed from the insured address. Your jewellery and watches are also covered for loss or damage anywhere in the world (other than New Zealand) for up to 30 consecutive days at any one time, but only while being worn by you or while in a locked safe.

There are some things we do not cover and these are shown under the heading 'General exclusions'.

## BENEFITS

We also provide the following benefits. Some benefits will only be available where we accept your claim for loss or damage due to an insured event, and others can be available independently of a claim for loss or damage to your home or contents. For benefits that are only available where there is loss or damage to your home or contents, we may decide to make a payment for a benefit before we accept or agree to pay your claim. This does not mean that your claim has been accepted, or that we have agreed to pay your claim. If we do not accept your claim, you must repay these amounts to us. All of the conditions of this policy apply to the benefits, unless the cover says otherwise.

## BENEFITS THAT APPLY ONLY TO YOUR HOME COVER

Where *you* have *home* cover, the following benefits and their limits are included in the *home sum insured*, except where we specifically state otherwise. There are some things we do not cover under these benefits and these are shown in the 'We do not cover' section of the tables which follow each benefit and under the heading 'General exclusions'.

### Other repair/rebuilding costs

#### We cover

When we are paying to rebuild or repair *damaged* parts of *your home*, we will pay the reasonable and necessary costs:

- ▶ of any temporary work (excluding any work related to land) required to make the *damaged* or *destroyed home* safe;
- ▶ for the services of professionals, such as architects or surveyors, which are needed to repair or rebuild at the *insured address*, and which are agreed with *us* before they are incurred;
- ▶ of the additional work required to the *damaged* parts of *your home* to make those *damaged* parts comply with current building regulations and laws.

This benefit will be paid within the *home sum insured* for any one *insured event*.

#### We do not cover

The cost of:

- ▶ removing tree stumps and roots still in the ground;
- ▶ removing or lopping fallen trees or fallen branches that have not *damaged your home*;
- ▶ additional work to undamaged parts of *your home* to make those undamaged parts comply with current building regulations and laws, even if the *damaged* parts of *your home* cannot lawfully be repaired without the additional work to the undamaged parts being undertaken;
- ▶ additional work to any *damaged* parts of *your home* to make those *damaged* parts comply with current building regulations and laws if the *damaged* parts could lawfully be repaired without the additional work being undertaken;
- ▶ making *your home* comply with building regulations and laws that existed but were not complied with when *your home* was originally built or altered.



## Removal of debris – home

### We cover

When we are paying to rebuild or repair *damaged* parts of *your home*, we will pay the reasonable and necessary costs of:

- › demolishing and removing the *damaged* parts of *your home* from the *insured address*;
- › removing debris when required in order to repair *your home*.

This benefit will be paid within the *home sum insured* for any one *insured event*.

### We do not cover

The cost of:

- › removing tree stumps and roots still in the ground;
- › removing any debris, including fallen trees or fallen branches that have not damaged *your home*.

## Damage to gardens and plants

### We cover

We will pay the cost of replacing trees, shrubs, plants, hedges or garden beds at the *insured address* with ones that are reasonably similar to the ones *lost or damaged* if:

- › the trees, shrubs, plants, hedges or garden beds at the *insured address* are damaged as a result of an *insured event*; and
- › we have accepted a claim for *loss or damage* to *your home* resulting from the same *insured event*.

The most we will pay for any one *insured event* is **\$1,000**. This benefit is paid in addition to the *home sum insured*.

### We do not cover

*Loss or damage* to lawns, grass or pot plants.

## SumExtra

### We cover

If we have accepted a claim for *loss or damage* to *your home* under this *policy* and we elect to settle *your* claim by repairing or rebuilding *your home* or by paying *you* the *replacement cost* to repair or rebuild *your home* (including where *you* will be building at a different location), and the *replacement cost* exceeds the *home sum insured*, we will pay:

- ▶ up to a further **10%** of the *home sum insured* towards the *replacement cost*, where the *loss or damage* is caused by *natural disaster*; or
- ▶ the full *replacement cost* where the *loss or damage* arises from any cause other than *natural disaster*.

We will only provide this benefit where all of the following conditions are met:

- ▶ the *home sum insured* at the time of *loss or damage* is equal to or greater than the estimated replacement cost that we generated when *you* applied for this *policy* or when this *policy* was renewed;
- ▶ the information that *you* supplied to *us* about *your home* which we used to calculate the estimated replacement cost was complete and correct in all respects;
- ▶ *you* inform *us* immediately of any changes to *your home*, including but not limited to the size or the quality of *your home*, so that we can calculate an updated estimated replacement cost; and
- ▶ where there are changes to *your home* which increase the estimated replacement cost, *you* increase *your home sum insured* to at least the amount of the updated estimated replacement cost.

The benefit is paid in addition to the *home sum insured*.

### We do not cover

- ▶ any amount under this benefit where *you* are purchasing an established home elsewhere;
- ▶ any amount under this benefit where *you* are not repairing or rebuilding *your home*;
- ▶ an amount in excess of any other benefit limit in this *policy*, including any benefit that is based on a percentage of the *home sum insured*. This SumExtra benefit does not have the effect of increasing the *home sum insured* under this *policy*.

## Temporary accommodation

### We cover

When an *insured event* results in damage to *your home* which makes it *unliveable*, and we agree, we will pay for *your* reasonable temporary accommodation costs while it is *unliveable* and for the time it will take to repair or rebuild *your home* to a condition where it is no longer *unliveable*. We will also pay for temporary accommodation for *your* domestic pets in a commercial boarding establishment for the same period that we pay for *your* temporary accommodation.

The most we will pay is up to **12 months** in residential accommodation of a similar standard to *your home*. If necessary, as part of your **12 month** allowance, we will pay a maximum of **1 month** in short term accommodation agreed to by us (e.g. standard rates for a hotel, motel or serviced apartment).

We will also pay the reasonable and necessary costs for:

- ▶ redirection of mail from the *insured address* for up to **12 months**;
- ▶ utility connection costs at the temporary accommodation residence;
- ▶ relocation of *your contents* to and from the temporary accommodation residence if you also have *contents cover* under this *policy*;
- ▶ assistance with bond payment if required, however any amount we pay in bond is recoverable from you by us. We may deduct this amount from any amount payable to you.

The most we will pay under this benefit is **10%** of the *home sum insured* and the longest period you can claim for is **12 months** for any one *insured event*. This benefit is paid in addition to the *home sum insured*.

### We do not cover

- ▶ temporary accommodation costs:
  - if damage to the contents is the only reason why you cannot live at *your home*;
  - if you do not intend to repair or rebuild *your home*;
  - if before the *loss or damage* occurred, you had planned to demolish *your home*;
  - if you do not need to pay for temporary accommodation;
  - if *your home* was not your principal place of residence at the time of the *loss or damage*;
  - if you had not intended to be living at *your home* during the repair or rebuild period (had *your home* not been damaged);
  - beyond the period it should reasonably take to replace or repair *your home* so you can live there again;
  - where the *loss or damage* is only to land;
  - where you decide that you do not wish to live in the *home* and it is not *unliveable*.
- ▶ any costs related to any *business activity* operated at *your home*.

## Supplementary living expenses

### We cover

If we agree an *insured event* makes the *insured address unliveable*, we will cover the reasonable increase in *your* normal living expenses which are necessary to maintain *your* normal standard of living as at the date of *loss or damage*.

We cover this increase:

- › for the reasonable time it takes to make *your insured address* no longer *unliveable*; or
- › until *you* are permanently relocated.

The most we will pay for any one *insured event* is **\$1,500**. This benefit is paid in addition to the *home sum insured*.

### We do not cover

- › expenses covered under any other benefit in this *policy*;
- › expenses that are recoverable from any other person or entity.

## Environmental improvements

### We cover

We provide cover for the costs associated with the purchase and installation of *environmental improvements* at the *insured address* such as a rainwater tank, solar systems or compost equipment when all of the following applies:

- › we have accepted a claim for an *insured event* that has caused *loss or damage* worth more than **80%** of *your home sum insured*; and
- › *your home* does not already have the relevant environmental equipment; and
- › we are authorising or arranging the repairs to *your home*; and
- › *you* have sought *our* agreement prior to purchasing or installing the relevant environmental equipment.

The most we will pay for any one *insured event* is up to **\$3,500**. This benefit is paid in addition to the *home sum insured*.

### We do not cover

Any amount which is, or would be but for the *home sum insured* limit, covered under 'Other repair/ rebuilding costs' to comply with the latest building regulations.

## Mortgage discharge costs

### We cover

When we pay a claim for *your home* to a credit provider which results in *your home* loan being fully repaid, we will pay the reasonably incurred administrative and legal costs of:

- ▶ discharging the mortgage; and
- ▶ deleting the mortgagee from the land title on *your home*.

The most we will pay for any one *insured event* is **\$1,500**. This benefit is paid in addition to the *home sum insured*.

### We do not cover

Penalty interest rate charges or early loan repayment charges imposed on *you* by the credit provider.

## Energy costs for loss of supply of renewable energy

### We cover

When we have accepted a claim for *loss or damage* to *your home*, if *your* alternative green energy generation equipment was *lost or damaged* by the same *insured event* and is unable to supply power, we will cover:

- ▶ any electricity costs *you* incur that *you* normally would not incur as a result of *your* green energy generation equipment being unable to supply power if *you* are living in *your home*; or
- ▶ *your* electricity bill during the time that *you* are in temporary accommodation.

The most we will pay under this benefit is **\$100** per month for up to **12** months. This benefit is paid in addition to the *home sum insured*.

### We do not cover

Any electricity costs *you* incur after *your* alternative green energy generation equipment is repaired or replaced or *you* are reimbursed for the cost to repair or replace the equipment.

## Retaining walls

### We cover

Where we pay a claim for *loss or damage* to your home, we will also pay for:

- › *loss or damage* to retaining walls, including your share in retaining walls that are jointly owned by you and other property owners; and
- › the cost of gaining access to the wall, stabilising the soil and providing footings and drainage materials directly necessary for the work to the retaining wall or part of the retaining wall that has suffered *loss or damage*.

The most we will pay for any one *insured event* is **\$75,000**, unless:

- › you are able to provide us with a valuation for your home that:
  - was issued by a quantity surveyor, suitably qualified valuer or builder prior to the *loss or damage*; and
  - separately identifies the total amount that would be required to completely rebuild each retaining wall and all other improvements contained within the residential boundaries; and
- › the *home sum insured* is at least the total amount that would be required to completely rebuild the home and all other improvements, including the retaining wall, as shown in the valuation;

in which case we will pay up to the full value of the retaining walls as shown in the valuation.

This benefit will be paid within the *home sum insured* for any one *insured event*.

### We do not cover

- › retaining walls that are over 1.5 metres above ground level and which do not have appropriate local authority permit, consent or certificate;
- › incomplete retaining walls;
- › *loss or damage* to retaining walls which is caused by earthworks excavations.

## BENEFITS THAT APPLY ONLY TO YOUR CONTENTS COVER

Where *you* have *contents* cover, the following benefits and their limits are included in the *general contents sum insured*, except where we specifically state otherwise. There are some things we do not cover under these benefits and these are shown in the 'We do not cover' section of the tables which follow each benefit and under the heading 'General exclusions'.

### Temporary accommodation for tenants

#### We cover

If *you* are a tenant at the *insured address* and *you* have *contents* cover and we agree *you* cannot live at the *insured address* while it is being repaired or rebuilt following *loss or damage* to *your* home at the *insured address*, we will pay any reasonable extra rent costs for temporary accommodation for *you* and *your* pets that *you* normally keep at the *insured address*, provided that *you* supply us with *your* written tenancy agreement which shows the rent that *you* pay at the *insured address*.

We will also pay the reasonable and necessary costs for:

- › redirection of mail from the *insured address*;
- › utility connection costs at the temporary accommodation residence;
- › relocation of *your contents* to and from the temporary accommodation residence;
- › assistance with bond payment if required, however, any amount we pay in bond is recoverable from *you* by us. We may deduct this amount from any amount payable to *you*.

The most we will pay under this benefit is **10%** of *your general contents sum insured* and the longest period *you* can claim for is **12** months for any one *insured event*. This benefit is paid in addition to the *general contents sum insured*.

#### We do not cover

- › any amounts *you* are able to recover for temporary accommodation costs under another insurance policy including any insurance policy taken out by a body corporate or similar entity;
- › any costs:
  - if *you* do not need to pay for temporary accommodation;
  - if the *insured address* was not *your* principal place of residence at the time of the *loss or damage*;
  - if *you* had not intended to live at the *insured address* during the repair or rebuild period had the home not been damaged;
  - beyond the period it should reasonably take to replace or repair the home so *you* can live there again;
  - related to any *business activity* carried on by *you*.

## Removal of debris – contents

### We cover

The reasonable and necessary costs to dispose of *your damaged contents*.

The most we will pay under this benefit is **15%** of the *general contents sum insured*. This benefit is paid in addition to the *general contents sum insured* for any one *insured event*.

### We do not cover

Disposal or storage of or removal of anything that is not defined as *contents*.

## Storage of undamaged contents

### We cover

If you make a claim for *loss or damage to your contents* due to an *insured event* (which we refer to in this benefit as the original claim) and we agree that *your undamaged contents* cannot be kept at the *insured address* because it is *unliveable*, we will also pay the reasonable cost to store the undamaged *contents* until the *contents* can be kept at the *insured address*.

The most we will pay for the storage of undamaged *contents* is **10%** of the *general contents sum insured*. This part of the benefit is paid in addition to *your general contents sum insured* for any one *insured event*.

We will also pay for any *loss or damage* to the *contents* that were undamaged in the original claim, provided that the *loss or damage* is caused by an *insured event* while they are at the place of storage. We will only pay up to the *general contents sum insured* shown on *your policy schedule* (less any amount paid or payable for *loss or damage to your contents* as part of the original claim). The cover for damage to *your contents* while at the place of storage will cease when *your policy* is cancelled or lapses, or we cease paying for storage of *your contents* under this benefit, whichever happens first. All the conditions, limits and exclusions of this *policy* apply to this cover.

This part of the benefit is paid within the *general contents sum insured*.

### We do not cover

- › storage costs once we decide the *contents* could be returned to the *insured address*;
- › storage of *contents* outside New Zealand;
- › if *your temporary accommodation* is the place where *your contents* are stored;
- › if *your contents* can be stored at the location of *your temporary accommodation*;
- › where we have already agreed to cover the relevant *loss or damage* under another benefit.



## Costs to re-establish important documents

### We cover

We will pay the costs to replace the following documents if they are also *lost or damaged* by an *insured event* at the *insured address*:

- › jewellery valuations;
- › passports, wills;
- › the land title on *your home*;
- › driver licences;
- › marriage certificates, birth certificates.

The most we will pay for any one *insured event* is **\$1,000**. This benefit is paid in addition to the *general contents sum insured*.

### We do not cover

Any document not shown in the list above.

## Accessories and spare parts

### We cover

We will cover *loss or damage* caused by an *insured event* to accessories and spare parts stored at the *insured address* for the following vehicles or craft:

- › motor vehicles or trailers;
- › motorcycles or mini-motorcycles;
- › motorised scooters or motorised bicycles;
- › watercraft (but not outboard motors).

The most we will pay for any one *insured event* is **\$1,000**. This benefit is paid in addition to the *general contents sum insured*.

### We do not cover

*Loss or damage* to:

- › keys for these vehicles or craft or replacement of their locks;
- › spare parts or accessories that are in or on the vehicle or craft at the time of the *insured event*;
- › outboard motors;
- › motor vehicles, trailers, motorcycles, mini-motorcycles, motorised scooters, motorised bicycles, watercraft or aircraft.

## Contents on common property

### We cover

If you insure *your contents* in a unit that you own under this *policy*, we will cover *your contents* permanently fixed on or to *common property* of your residential complex on the same basis as if they were at the *insured address*.

The most we will pay for any one *insured event* is **\$1,000**. This benefit is paid within the *general contents sum insured*.

### We do not cover

*Loss or damage:*

- › for which *your* body corporate is liable;
- › to any item not owned solely by *you*.

## Contents in commercial storage

### We cover

We will cover *your contents* whilst stored in a secure commercial storage facility for *loss or damage* caused by an *insured event*. This cover is only provided if the commercial storage facility:

- › is lockable; and
- › only accessible by *you* or someone authorised by *you*; and
- › is fully enclosed by walls (including doors), floor and roof.

This benefit is paid within the *general contents sum insured*.

### We do not cover

*Loss or damage:*

- › to cash, smart cards, phone cards, documents able to be cashed or traded, vouchers, money orders or stamps (not in a *set* or *collection*);
- › to *contents* in storage after *your contents policy* at the *insured address* ceases;
- › from theft when there is no forced entry into *your* storage facility;
- › to *contents* stored outside New Zealand;
- › to *contents* not stored in a commercially operated facility;
- › to food of any kind;
- › where we have already agreed to cover the relevant *loss or damage* under another *policy* benefit.

## Contents in transit

### We cover

If *you* are permanently moving to a new address in New Zealand, we will cover *your contents* while they are being moved, for *loss or damage* caused by:

- › fire;
- › *flood*;
- › collision, overturning, accident or theft of the vehicle carrying them.

This benefit is paid within the *general contents sum insured*.

### We do not cover

*Loss or damage* to cash, smart cards, phone cards, documents able to be cashed or traded, vouchers, money orders or stamps (not in a *set or collection*).

## Visitors' contents

### We cover

We will cover *loss or damage* to *contents* owned by invited visitors caused by an *insured event* at the *insured address*.

The longest period that we will cover *contents* owned by visitors staying at the *insured address* is **30** consecutive days.

The most we will pay for any one *event* is **\$1,000**. This benefit is paid within the *general contents sum insured*.

### We do not cover

*Loss or damage*:

- › to any item insured under another policy;
- › to cash, smart cards, phone cards, documents able to be cashed or traded, vouchers, money orders or stamps (not in a *set or collection*);
- › to mobile phones, or devices with mobile phone functionality;
- › to laptops, electronic tablets, PDAs and GPS/navigational devices;
- › to *contents* belonging to a visitor who is paying to stay at *your* home, or who is staying as part of a mutual accommodation swap arrangement;
- › to optical items, vision and sound equipment.

## Food and medication spoilage

### We cover

We will cover spoilage of refrigerated food, frozen food and refrigerated medicines at the *insured address* caused by:

- › an *insured event*;
- › the sudden escape of refrigerant fumes;
- › electrical or electronic breakdown, failure or malfunction;
- › the public electricity supply fails at *your insured address*.

If you make a claim under this benefit, no excess applies.

The most we will pay for any one *insured event* is **\$1,000**. This benefit will be paid within the *general contents sum insured*.

### We do not cover

*Loss or damage:*

- › caused by an interruption to *your* electricity supply because of *your* failure to pay *your* bill;
- › arising from, or caused by industrial action;
- › arising from an accidental act or omission of a power supply authority;
- › arising from the deliberate act or omission of a power supply authority unless this action is in the interest of public safety.

## Identity theft cover

### We cover

If *you* are a victim of identity theft during the *period of insurance*, then we will pay the reasonable costs *you* have to pay in trying to re-establish *your* personal credit history, including:

- › *your* unpaid wages for any time *you* had to take off work because of this;
- › extra loan application fees that *you* incur from having to reapply for a loan declined because of false credit history as the result of identity theft;
- › telephone, fax and postage costs spent on recreating *your* credit worthiness;
- › domestic travelling costs spent on recreating *your* credit worthiness;
- › legal fees we have agreed to pay in writing (before *you* incurred them) to:
  - defend actions brought against *you* incorrectly by retailers and collection agencies following theft of *your* identity;
  - remove wrongly recorded civil judgments against *you*;
  - challenge the accuracy of any New Zealand credit reporting agency or bureau;
  - prepare legal statements, statutory declarations or affidavits required by the police, *your* bank or credit provider.

The most we will pay for all claims made under this benefit in the *period of insurance* is \$1,500. This benefit is paid within the *general contents sum insured*.

### We do not cover

- › payment of any debts resulting from identity theft;
- › any costs or fees relating to or for a *business activity*;
- › speeding or parking fines or infringements;
- › costs to re-establish *your* identity or credit records outside New Zealand;
- › any costs incurred outside of New Zealand or within New Zealand for services outside of New Zealand;
- › travel costs not specifically covered by this benefit, including international airfares;
- › any costs recoverable from *your* bank, credit card or credit provider;
- › identity theft which happened because *you* did not follow the terms and conditions of any bank, credit provider or other financial institution for keeping *your* identification or access details safe (e.g. passwords and PIN);
- › costs not supported by written evidence showing *us*
  - when they were incurred;
  - that they clearly resulted from a claim under this additional benefit;
- › legal fees or costs not approved by *us* in writing before *you* incurred them;
- › costs associated with identity theft by anyone who lives at the *insured address*.

## Financial transaction card cover

### We cover

We will cover *your* loss if *your* credit cards or other financial transaction cards are physically stolen from the *insured address* and used fraudulently.

The amount we pay *you* will be less any amount covered by *your* credit card or other financial transaction card provider.

If *you* make a claim under this benefit, no excess applies.

The most we will pay for all claims made under this benefit in the *period of insurance* is \$2,500. This benefit is paid within the *general contents sum insured*.

### We do not cover

Loss or theft:

- ▶ of any gift cards or cash passports;
- ▶ occurring because:
  - *you* did not follow the terms and conditions of use for *your* card and someone used *your* card after they found or had access to *your* PIN; or
  - *you* did not tell the financial institution or credit provider who issued *your* card within 24 hours after *you* discover the card is lost or stolen.
- ▶ by *you* or anyone who lives at the *insured address*.

## BENEFITS THAT APPLY TO BOTH HOME AND CONTENTS COVERS

The following benefits are available if you have either *home*, *contents* or both *home* and *contents* covers. Where you have both *home* and *contents* cover, you will only receive the following benefits once for any *insured event*.

There are some things that we do not cover under these benefits and these are shown in the 'We do not cover' section of the tables which follow each benefit and under the heading 'General exclusions'.

### Fatal injury compensation

#### We cover

If you suffer a fatal injury as a direct result of an *insured event* at the *insured address*, we will pay \$5,000 in total for any one *insured event* if:

- ▶ we have paid a claim for *loss or damage to your home or contents* resulting from the *insured event*; and
- ▶ death occurs within 12 months of the *insured event*.

This benefit is paid in addition to the *home sum insured* or the *general contents sum insured*.

### Lock replacement

#### We cover

If you have *home* or *contents* cover we will cover the necessary costs of replacing or recoding locks to the external doors or windows of *your home* at the *insured address* if the keys to those locks are stolen anywhere in Australia or New Zealand.

If you make a claim under this benefit no excess applies.

The most we will pay for any one *event* is \$1,000. This benefit is paid within the *home sum insured* if you have *home* cover, the *general contents sum insured* if you have *contents* cover, or where you have both, it will be paid from the cover where the sum insured is least likely to be exhausted by the *insured event*.

#### We do not cover

The cost of replacement of the keys.

## Gradual damage

### We cover

We will pay for gradual physical damage to *your home* and/or to *your contents* resulting from water leaking or overflowing from any internal water system, provided that the damage first occurs during the *period of insurance* and the water leak or overflow causing the damage was not visible, noticeable, or obvious.

The most we will pay for claims under this benefit is **\$5,000** for any one *event*, inclusive of the cost of searching for the source of the leak or overflow, where reasonably incurred, and the cost to repair and restore the damage to *your home* caused by the search. This benefit is paid within the *home sum insured* if you have *home cover*, the *general contents sum insured* if you have *contents cover*, or where you have both, it will be paid from the cover where the sum insured is least likely to be exhausted by the *insured event*.

Internal water system means any water pipe, waste disposal pipe or water storage tank which is hidden from view within the dwelling structure and is permanently connected and/or contained within its walls, cupboards, floors, ceiling or roof, or connected to any water cylinder, refrigerator, water purifier, washing machine, dishwasher or similar household item.

### We do not cover

- › damage that occurs when you could reasonably be expected to be aware of this condition;
- › any other gradually occurring damage.



## Damage from physical injury or incident

### We cover

When you have *home* or *contents* cover we cover damage to and/or soiling of your:

- › *home* if you have *home* cover;
- › *contents* if you have *contents* cover;

as a result of:

- › physical assaults or death (whether by natural cause, suicide, manslaughter or murder);
- › forensic or police investigations into any physical assault or death.

Also included are the costs of:

- › specialist forensic and other cleaning services;
- › removal of bio-hazard materials.

The most we will pay for any one event is **\$20,000**. This benefit is paid within the *home sum insured* if you have *home* cover, the *general contents sum insured* if you have *contents* cover, or where you have both, it will be paid from the cover where the sum insured is least likely to be exhausted by the *insured event*.

### We do not cover

- › damage or soiling caused by incidents which are the result of physical assaults, manslaughter or murder committed by you;
- › damage or soiling caused by incidents which are not the result of physical assaults or death (unless they are otherwise covered by this *policy*);
- › odour removal;
- › any costs associated with repairing or rebuilding undamaged parts of the *home* or undamaged parts of *contents*.

## Motor burnout

### We cover

The burning out or fusing of electric motors, that happens in the *period of insurance*, in household equipment or appliances which are part of *your*:

- › *home* if *you* have *home* cover;
- › *contents* if *you* have *contents* cover;

and which are less than **10** years old.

Cover includes the reasonable cost to repair or replace:

- › the electric motor or compressor containing the motor;
- › an entire sealed unit, filter, dryer and re-gassing if the electric motor is inside a sealed refrigeration or air conditioning unit;
- › a water or sewage pump, combined with its electric motor, if the replacement pump motor cannot be bought on its own.

If an electric motor or motor in an appliance cannot be repaired or replaced, *we* will pay the replacement cost of an equivalent motor or motor in a sealed unit of the same specification and standard available today. *We* will not pay for the replacement of the whole appliance unless it costs *us* less than it would to repair or replace the motor.

This benefit is paid within the *home sum insured* if *you* have *home* cover, the *general contents sum insured* if *you* have *contents* cover, or where *you* have both, it will be paid from the cover where the sum insured is least likely to be exhausted by the *insured event*.

### We do not cover

- › the cost of extracting or reinstalling a submersible pump;
- › any amount *you* can recover under a manufacturer's guarantee or warranty whether or not *you* actually attempt to recover it;
- › *loss or damage* to motors forming part of equipment used in conjunction with *your* trade, *business activity* or occupation.

## LEGAL LIABILITY

The most we will pay for all claims from any one event for legal liability covered by this policy is \$2 million, including all associated legal costs we have agreed to pay following your claim.

### Home legal liability

If you have home cover we cover your legal liability to pay compensation for loss or damage to property resulting from an event which happens during the period of insurance:

- › in connection with you owning or living in your home; and
- › at the insured address.

### Contents legal liability

If you have contents cover we cover your legal liability to pay compensation for loss or damage to property resulting from an event which happens anywhere in New Zealand during the period of insurance:

- › which is unrelated to your ownership of your home or land at the insured address; or
- › that results from fixtures and fittings attached to the insured address and that you are legally responsible for under a rental agreement; or
- › that arises in connection with you living in a unit, and/or owning a unit, and your legal liability is not covered under a home/building policy which covers that unit.

## Additional cover for a vacant block of residential land

When we cover your contents we will also cover your legal liability to pay compensation for loss or damage to property resulting from an event which happens during the period of insurance on a vacant block of land that:

- › you own;
- › is zoned for residential housing;
- › is no more than 20 acres; and
- › is where you intend to build your future home.

We may refuse to pay a claim under this cover if you do not take reasonable precautions to keep the land free of obvious hazards for anyone coming onto the land.

We only provide this cover for events that happen in the 12 month period from the time you became the owner of the land but cover ends immediately if:

- › you sell the land;
- › any building or rebuilding work commences at the vacant block of land.

## Additional cover for liability relating to ownership of land following loss or damage to the home

We will continue to cover your legal liability to pay compensation for loss or damage to property resulting from an event which happens at the insured address during the period of insurance. We will provide this cover for up to 12 months under your contents cover when:

- › both your home and contents are insured with us at the time your home is damaged or destroyed by an insured event; and
- › we pay you the full amount of the home sum insured and the cover for your home ceases.

We may refuse to pay a claim under this cover if *you* do not take reasonable precautions to keep the *insured address* free of obvious hazards for anyone coming onto the *insured address*. This includes, but is not limited to, fencing off or securing damaged buildings and fencing any swimming pool.

This cover ends immediately if:

- ▶ any building work commences at the *insured address*; or
- ▶ *you* cease to insure *your contents* under this *policy*; or
- ▶ we cancel this *policy*.

## Legal liability – what we do not cover

We do not cover legal liability directly or indirectly caused by, arising from, in connection with or involving:

### Agreements you enter into

any agreement or contract *you* enter into, but we will cover *your* legal liability:

- ▶ if it would have existed had *you* not entered into the agreement or contract;
- ▶ if *your* liability is:
  - under a tenancy rental agreement; and
  - for damage to *your* landlord's property at the *insured address* caused by:
    - fire which is accidentally caused by *you*; or
    - water leaking from pipes, washing machines, dishwashers or water overflowing from a blocked bath or tub.

### Aircraft

*you* using or owning any aircraft, *drone* or the facilities to land or store aircraft, but we will cover:

- ▶ a remote controlled scale model or toy aircraft (with the exception of *drones*, which are still excluded from liability cover);
- ▶ a kite designed to be held by a person on land or attached to a non-motor powered watercraft (e.g. a surf kite).

### Animals

any animal other than *your* domestic dog or cat.

### Asbestos

exposure to or potential exposure to asbestos in any form.

### Buildings, property or land not at the insured address

*you* owning, occupying or renting any building, property or land not at the *insured address* except for:

- ▶ the *common property* at the *insured address* when *you* insure the *contents* in a *unit* under this *policy*;
- ▶ residential land that is covered under 'Additional cover for a vacant block of residential land'.

### Building, structurally altering or renovating

building work being carried out at the *insured address* where the total cost of building, structurally altering, extending or renovating is more than **\$50,000**.

### Business activity

any *business activity*, but we will cover this if it relates to part-time or casual babysitting where *you* do not need to be registered or licensed to do this.

### Caravans and trailers

using or towing a caravan, mobile home or trailer.

### Committee members or officials

*your* actions or duties as a committee member or director of a club or association, as a coach, referee or official at a game or organised sporting activity.

## Contamination

the use, consumption, supply, storage or manufacture of illegal drugs.

## Death or injury

death or injury of:

- ▶ *you*;
- ▶ a child (born or unborn) under **18** years who is *your* child or the child of *your* spouse, de facto or partner;
- ▶ *your* pets;
- ▶ anyone who usually lives at the *insured address*.

## Defamation

defamation.

## Fines, penalties and other damages

civil or criminal penalties or fines, reparation or aggravated, exemplary, punitive or multiple damages.

## Illness or disease

illness, disease or sickness *you* knowingly spread, exposed other people to or failed to take due care to prevent spreading or exposing others to after *you* knew about it.

## Legal actions in other countries

legal actions or legal claims brought against *you*, decided or heard in countries outside New Zealand.

## Motor vehicles or motorcycles

the use or ownership of a motor vehicle or motorcycle or instructing someone on how to use it unless at the time of the *event*, it was being used legally and was:

- ▶ a remote controlled motor car;
- ▶ a wheelchair or a mobility scooter designed to accommodate physical disabilities or the elderly;
- ▶ a golf cart or buggy;
- ▶ domestic gardening equipment (e.g. a ride-on mower).

## Property owned by you or property in your physical or legal custody

damage to property which:

- ▶ is owned by *you* or *your* family, or anyone who usually lives with *you* at the *home*;
- ▶ belongs to someone else and is in *your* physical or legal custody or control;

but we will cover *your* legal liability under a tenancy rental agreement when *your contents* in *your* landlord's residential property are insured under *your policy*, for damage caused by:

- ▶ water leaking from pipes, washing machines, dishwashers or water overflowing from blocked baths or tubs;
- ▶ fire damage which is accidentally caused by *you* to *your* landlord's property.

## Watercraft

using or owning any watercraft unless it is a sailboard, surfboard, wave board, canoe, kayak, non-motorised surf ski, motorised kontiki or remote controlled scale model or toy watercraft.

## Your employees

death or injury of *your* employees or damage to their property while they are working for *you*.

## GENERAL EXCLUSIONS

*You* are not covered under any section of this *policy* for *loss* or *damage*, cost or legal liability directly or indirectly caused by, arising from, in connection with or involving:

### Actions or movements of the sea

any rises in the level of the ocean or sea, sea waves, high tides or king tides, any other actions or movements of the sea. Actions or movements of the sea do not include a tsunami or storm surge. A storm surge means a rush of water onshore associated with a low pressure system and caused by strong winds pushing on the ocean's surface.

## Animals

- › any animal owned by *you* or that *you* are responsible for, other than *your* legal liability for *your* domestic dog or cat that is covered under the 'Legal liability' cover;
- › any animal allowed onto the *insured address* by *you*, or anyone living at the *insured address*;
- › any animal pecking, biting, clawing, scratching, tearing or chewing *your home* or *contents*, or damage caused by their urine or excrement, but we will cover damage caused by an animal (except insects, vermin or rodents) which becomes accidentally trapped inside *your home*;
- › insects, vermin or rodents, but we will cover:
  - fire damage they cause;
  - water damage they cause.

## Biological, chemical, other pollutant or contaminant

- › any actual or threatened biological, bacterial, viral, germ, chemical or poisonous substance, pollutant or contaminant; or
- › any looting or rioting following the actual or threatened release of any biological, bacterial, viral, germ, chemical or poisonous substance, pollutant or contaminant; or
- › any action taken by a public authority to prevent, limit or remedy the actual or threatened release of any biological, bacterial, viral, germ, chemical or poisonous substance, pollutant or contaminant.

But we will cover:

- › fire damage that results from the above;
- › *your* legal liability under 'Legal liability' cover, to the extent *your* legal liability arises from *your* use of pesticides or herbicides at the *insured address*;
- › the cost to remove asbestos or its derivatives from the *insured address* during repairs or rebuilding if we have accepted a claim for *loss or damage to your home* or *contents*;

- › damage to the extent it is covered under the benefit 'Damage from physical injury or incident'.

## Breaking the law

- › *you*, or someone with *your* knowledge or permission, committing or trying to commit an unlawful or criminal offence;
- › *your* manufacture, possession, supply or consumption of any illegal substances or illegal drugs;
- › *you* not obeying any government or local authority statute, bylaw or regulation, including but not limited to, those relating to:
  - installing smoke alarms;
  - pool fencing;
  - failing to install a balcony railing or balustrade when required;
  - dangerous goods and liquids;
  - firearms;
  - control and safekeeping of dangerous or restricted breeds of dogs, including not obeying any legal requirement to restrain a dog in public or keep it fenced in.

## Building extensions, structural alterations or renovations

building extensions, structural alterations or structural renovations to *your home*, including the removal of external walls, roof materials, external cladding, windows or doors. We also do not cover:

- › damage caused by cracking, collapse, subsidence or damage to *your home* and *contents* caused fully or partially by the building work;
- › damage caused by *storm, flood* or water entering *your home* through openings in the walls or roof or other unfinished parts of *your home* whether or not they are temporarily covered at the time of the damage;
- › damage caused by *storm* or *flood* to any part that is not fully built;

- › theft or damage by someone who enters or leaves through an unlockable part of *your home*;
- › malicious damage or vandalism to unfinished parts of *your home*.

### Business activities

*business activities* that you carry out at the *home*, except where we have agreed to cover them.

### Chemical damage when cleaning

chemicals, such as detergents and solvents, when you or someone authorised by you is using them for cleaning, renovation, restoration or repair.

### Computer virus or computer hacking

a computer virus, hacking, data destruction, denial of service or any other unauthorised access to computers, networks or other data storage devices.

### Confiscation or damage by a legal authority

confiscation, nationalisation, requisition, acquisition, designation, decision, destruction or damage caused by the police, a government authority or someone with the legal authority to do this.

### Consequential losses or extra costs following an event covered by your policy

consequential loss (financial and non-financial loss) or extra costs following an *event* covered by *your policy*, such as, but not limited to, the following:

- › loss of income or wages;
- › loss of value;
- › medical expenses;
- › loss or costs, including the cost of *your* time (e.g. inconvenience), to prove *your* loss or to help *us* with *your* claim (e.g. telephone calls, postage);
- › cost of hiring appliances after *your* appliances are *lost or damaged*;

- › professional, expert, legal, consulting or valuation costs unless you obtained *our* prior written approval to incur these costs;
- › cost of replacing or reapplying pest control chemicals and baits in or around the *insured address*;
- › cleaning costs;
- › any costs related to stress or anxiety;
- › loss of use or loss of enjoyment;
- › any other intangible loss;
- › any costs not specifically covered by *your policy*.

But we will cover the reasonable increase in normal living expenses covered by the benefit 'Supplementary living expenses' and those items specifically listed under the benefit 'Identity theft cover'.

### Contaminated land

contamination of land from any cause, or any requirement to test land for contamination.

### Defect, structural fault, design fault or inherent fault

- › a defect, structural fault, design fault or inherent fault;
- › the failure of the *home* to contain or incorporate materials or to utilise a design, a system, or a standard of workmanship which effectively prevents or manages the presence or penetration of moisture or water to which the *home* might reasonably be subjected.

### Deliberate actions by you

an act or omission by you, *your family*, anyone living at the *insured address* or any owner or part owner of *your home* or *contents*, or anyone acting with *your* consent which:

- › is deliberate;
- › is a deliberate lack of action; or
- › demonstrates a reckless disregard for the consequences of that action or omission.

## Failing to take care of your home or contents

*your* failure to:

- › take reasonable care of *your home* and *contents*;
- › keep *your home* and *contents well maintained and in good condition*;
- › fix faults and defects as soon as *you* become aware of them;
- › take reasonable steps to limit or minimise any *loss or damage* once it has started to occur.

## Fences in a state of disrepair

gates, fences or outdoor wall fences that were in a state of disrepair which would have been obvious to a reasonable person before the damage occurred.

## Food spoilage

spoilage of food and medicines, other than the cover provided under additional cover 'Food and medication spoilage'.

## Ground movement

erosion, vibration, weakening or removal of support, subsidence, landslip (other than *natural landslip* as referred to under the *natural disaster* exclusion), shrinkage, expansion, settling, ground heave or any other earth movement.

## Hazardous materials

any hazardous materials if not stored or used in accordance with the relevant law, controls and manufacturer's instructions.

## Historic homes

compliance with any heritage order or covenant that applies to the *home* where the *home* is registered with the Heritage New Zealand Pouhere Taonga.

## Land damage

- › *loss or damage* to land;
- › costs associated with stabilising land in order to facilitate the repair or rebuild of the *home*;
- › treatment of the land required to make it suitable for repair or rebuilding of the *home*;
- › erecting or upgrading improvements to land, which are required to avert or mitigate *loss or damage* to the *home*, even if such *loss or damage* or costs are covered by the Earthquake Commission

but we will cover the digging of foundations or piles as required by government or local authority statutes, bylaws or regulations, necessary to allow for the repair or rebuild of the *damaged* portion of *your home* following *loss or damage* covered by this *policy*.

## Mechanical or electrical breakdown

mechanical or electrical failure, breakdown or anything that fails to operate properly, but we will cover damage caused by:

- › fire spreading from an electrical fault to other parts of *your home* and *contents*;
- › lightning;
- › motor burnout to the extent it is covered under 'Motor burnout' benefit.

## Medical equipment and aids

any medical equipment, item or aid which is designed to be either wholly or partially within the body, either permanently or temporarily. By 'within the body' we mean medical equipment, items or aids which require a specific incision to be made in the body to enable them to be implanted.

## Methamphetamine

the manufacture, supply, storage, possession or use of methamphetamine or any pre-cursor chemicals or materials used in any of these activities in or near *your home* or *contents*.



## Moving the home

lifting or moving the *home*, or removal of structural support.

## Natural disaster damage

*natural disaster*, but we will cover:

- › *loss or damage to your home* caused by *natural disaster* where:
  - the *loss or damage to your home* is covered under the Earthquake Commission Act 1993 (the EQC Act); and
  - the Earthquake Commission has accepted liability and has paid the maximum amount that it is liable for under the EQC Act for *your claim*; and
  - all amounts paid to *you* by the Earthquake Commission have been used by *you* to carry out repairs, or to rebuild the *home*, and/or to mitigate further *loss or damage*.
- › *loss or damage caused by natural disaster* to the following items that are part of *your home* if they are covered by this *policy* but are not subject to insurance under the EQC Act:
  - permanently installed swimming or spa pools; or
  - drains, pipes, and cables; or
  - driveways, paths, patios, fences and walls (policy limits apply); or
  - tennis courts.

A natural disaster excess of **\$5,000** will apply to claims for these items.

- › *loss or damage to your contents* caused by *natural disaster* where:
  - the *loss or damage to your contents* is covered under the EQC Act; and
  - the Earthquake Commission has accepted liability and has paid the maximum amount that it is liable for under the EQC Act for *your claim*.

- › *loss or damage caused by natural disaster* to items of *your contents* if they are covered by this *policy* but are not subject to insurance under the EQC Act.

Where the *loss or damage to your home or contents* caused by *natural disaster* is covered by this *policy*, we will only pay:

- › the difference between the amount we would have paid under this *policy* if the cause of the *loss or damage* was other than *natural disaster*, and the amount paid or payable by the Earthquake Commission (including EQC excesses);
- › less any excess payable under this *policy*.

All other benefits in this *policy* will apply.

## Not complying with building regulations

*Your home* not complying with building laws or regulations, except those laws or regulations introduced after *your home* was originally built or altered which *your home* was not required to comply with.

## Photographs, electronic data and images

repairing, replacing or fixing:

- › electronic data or files that are corrupted, damaged or lost, including software, photographs, films, music or other visual images or audio files stored electronically or on any other medium, unless:
  - the device that they are stored in was *lost or damaged* by an *insured event*; and
  - the electronic data or files were legally purchased and *you* cannot restore them free of charge.
- › hard copies of photographs, films or other visual images that are *lost or damaged*, but we will cover the cost of reproducing hard copy photographs *you* have purchased from, or had produced by, a professional photographic business or retail outlet.

## Radioactivity

Radioactivity, and contamination from radioactivity, or the use, existence or escape of:

- › nuclear fuel;
- › nuclear material or waste;
- › action of nuclear fission including detonation of any nuclear device;
- › nuclear weapon;
- › ionising radiations; or
- › any looting or rioting following such an event.

## Replacement of water

the loss, storage and replacement of water in any tank, container, pool, spa and any other water storage vessel.

## Revolution, war

- › revolution, hostilities, war or other acts of foreign enemy, war like activity (whether war is declared or not), invasion, military coup, civil war, mutiny, civil commotion assuming proportions of or amounting to a popular uprising, military uprising, rebellion, insurrection, military or usurped power; or
- › any looting or rioting following these incidents.

## Roots of trees, shrubs and plants

the roots of trees, shrubs or plants, but we will cover damage to *your home* and *contents* caused by:

- › liquid leaking or overflowing from pipes or drains that are blocked or *damaged* by these roots;
- › roots from a fallen tree.

## Scorching

scorching or burning by cigars, cigarettes or pipes.

## Seepage of water

water seeping or running:

- › through the earth (hydrostatic water seepage);
- › down the sides of earth or earth fill that is up against *your home*;
- › down the sides or underneath swimming pools or spas causing them to move, change shape, lift or leak through their hydrostatic valves;
- › against or through retaining walls and forcing them to move or crack;
- › from agricultural pipes.

## Structural improvements at units

- › structural improvements owned by *your* body corporate or equivalent body;
- › structural improvements located on *common property*, but we will cover fixtures owned by *you* as a tenant which will be removed by *you* when vacating a *unit*.

## Tenants, paying guest or boarders

tenants, paying guests, boarders, visitors who are in *your home* as part of an accommodation swap arrangement, or someone who lives or stays in *your home* with them or a person who entered the *home* with their consent, but we will cover *loss or damage to your home or contents* to the extent it is caused by:

- › fire;
- › explosion;
- › impact by a vehicle;
- › breakage of fixed glass;
- › water or liquid leaking or overflowing from pipes or water containers.

## Terrorism

any act of terrorism, including but not limited to the use of force or violence, or the threat of force or violence which from its nature and context is done with political, religious, ideological, ethnic or similar purposes, including the intention to influence any government and/or to put the public or any member of the public in fear.

## Theft or malicious damage

theft or malicious damage:

- › by *you* or someone who lives in the home; or
- › by someone who entered the home with:
  - *your* consent; or
  - the consent of someone with *your* authority to access *your* home.
- › caused by thieves or burglars entering the *insured address* (but not an *open air* area) from *common property* without signs of forced entry.

## Tree lopping

trees being lopped, felled or transplanted by *you* or someone authorised by *you*.

## Unrepaired land

land where:

- › *you* are aware that the land requires repair or poses a threat to the *home*, or
- › *you* or a previous owner of the *home* has received payment from the Earthquake Commission to effect repairs to land, and those repairs have not been undertaken.

## Wear, tear and gradual deterioration

wear, tear, rust, fading, rising damp, mould, mildew, corrosion, rot, fungi, action of light, atmospheric or climatic conditions or gradual deterioration (other than the cover provided under the benefit 'Gradual damage').

## When security or alarms are not working

*loss or damage* if the door locks, window locks or alarms *you* told *us* were installed, were in fact not installed, not in working condition, disconnected, or not used as intended and *we* relied on them being there as a reason for accepting and continuing *your policy* (however, forgetting to turn on *your* alarm or to lock a door will not in itself affect theft cover under *your policy*, unless *you* have failed to take reasonable care).

# 3. CLAIMS

## MAKING A CLAIM

Contact us as soon as possible if you suffer *loss or damage*, or if there is an *event* that could result in a claim under this *policy*.

### What you must do

**Step 1 Make sure everyone is safe. For emergencies, please call 111.**

**Step 2 Try to prevent further loss or damage.**

If possible take reasonable steps to prevent further *loss or damage* or liability.

**Step 3 Immediately report any theft and malicious damage to the police.**

Give them a list of all stolen or damaged items. Keep details of the date reported, name of the police officer, police station reported to and the report number.

**Step 4 Contact us as soon as possible.**

You can call us 24 hours a day. If you delay reporting your claim, we may refuse to pay your claim or may not pay for any additional *loss or damage* caused by your delay. You must provide details of what has been affected by the *event*.

If the damage to your *home or contents* was caused by another person, please provide us their name and address.

### Legal liability claims

You must tell us about any *event* that has caused *loss or damage* to property, or which may give rise to a claim.

You must also immediately tell us about any written or verbal communications that you receive about any possible claim or any demands made on you to pay loss, cost, expense or compensation to others and any court actions or offers of settlement and send these to us. You must not incur any expense or negotiate, pay, settle, admit, repudiate or make any agreement in relation to any claim without our written consent.

If you make a legal liability claim that is covered under this *policy* we can decide to defend you, settle any claim against you or represent you at an inquest, official inquiry or court proceedings, but we are not obliged to do so.

If we decide to defend you, settle any claim against you or represent you, then you must give us all the help we need, including help after your claim is settled.

### For us to process your claim for loss or damage to your home or contents you must

- › allow us to inspect *your* damaged *home* and/or *contents*;
- › allow us to arrange for experts to assess *your* damaged *home* and/or *contents* and to quote on repair or replacement;
- › provide us with a quote for repair or replacement if we ask for this. If you choose to use *our* recommended repairers (when available), there is no need to obtain *your* own quotes;
- › when requested, and at *your* expense, provide us with all proofs of ownership and value, information, co-operation and assistance in relation to a claim as we may reasonably require, including attending meetings and giving evidence in a court or tribunal;
- › when requested, and at *your* expense, cooperate with *our* assessors, investigators, lawyers and anyone else we may appoint to help us;
- › allow us, or a person nominated by us, to recover, salvage or take possession of *your home* and/or *contents*. When we ask, you must send any items to us, or cooperate in *our* collection or retrieval of such items;
- › consult an expert if we ask for this.

### What you must not do

- › do not dispose of any damaged parts or items of *your home* or *contents* without *our* consent;
- › do not carry out or authorise repairs without *our* consent unless you cannot contact us and need to make emergency repairs to protect *your home* or *contents*;
- › do not wash or clean or remove debris from any area damaged by fire without *our* consent unless you need to do this to prevent further *loss* or *damage*;

- › do not admit liability or responsibility to anyone else unless we agree;
- › do not negotiate, pay, make any agreement or settle a claim with anyone else unless we agree;
- › do not accept payment from someone who admits fault for *loss* or *damage* to *your home* or *contents*. Refer them to us instead.

### If you do not comply

If *you* do not comply with *our* requirements when making a claim we can reduce or refuse *your* claim and/or recover from *you* any costs and/or any money we have paid and/or cancel *your policy*.

## YOUR EXCESS

### What is an excess?

An excess is the amount *you* have to pay for each *event* when *you* make a claim. Sometimes *you* might have to pay more than one type of excess. The amount and types of excess are shown on *your policy schedule* and/or in this policy document. *Your* excess or excesses are payable irrespective of the sum insured or policy limit applicable to *your* claim. Where *you* sustain *loss* or *damage* from more than one *event*, the excess (or each applicable excess) will be payable for each separate *event*.

### The types of excess are:

#### Standard excess

A standard excess applies to all claims **unless** stated otherwise in this policy document. *You* can choose a higher standard excess to reduce *your* premium.

The amount of the standard excess applied to the *home* can be different to the standard excess applied to the *contents*.

### Additional excess

In some circumstances, an additional excess may apply based on *our* assessment of the risk. This excess is payable in addition to any other excess unless stated otherwise in this policy document or *your policy schedule*.

### Natural disaster excess

This excess applies in addition to any other excess if *you* make a claim as a result of *natural disaster* for *loss or damage* to items of *your home* that are not insured under the Earthquake Commission Act.

### Unoccupied excess

This excess applies in addition to any other excess, unless stated otherwise in the policy document, if, at the time of the *loss or damage* covered by *your policy*, the *home* has been *unoccupied* for more than **60** continuous days.

## When you claim for both home and contents

When both *your home* and *contents* at the one *insured address* are insured with *us* under this *policy* and *your claim* is for *loss or damage* to both arising from the one *event*, *you* must pay whichever is the higher of *your standard excesses* under either *your home* or *your contents policy*. *You* must also pay any of the other excesses which apply to *your claim*.

## How to pay your excess

When *you* make a claim we will choose whether to deduct the applicable excesses from the amount we pay *you* or direct *you* to pay the excesses to *us* or to the appointed repairer or supplier. We may require *you* to pay the excess in full before we pay *your claim* or provide any benefits under *your policy*. The fact we have asked for payment of *your excess* does not of itself mean that *your claim* has or will be accepted by *us* either in whole or in part.

## HOW WE SETTLE YOUR CLAIM

### We choose how we settle home claims

If we agree to pay a claim for *loss or damage* to *your home*, we will decide if we will:

- › repair damage to *your home* to *our* option of the 'new for old' condition or to a similar condition to what *your home* was in before the *loss or damage* occurred;
- › rebuild *your home* to the 'new for old' condition;
- › allow *you* to repair or rebuild *your home* and pay *you* up to the *replacement cost* after *you* have incurred it. If we choose this option, we will have the right to inspect the building works at any time, to be fully informed about the works, and to inspect any relevant documentation;
- › pay *you* up to the *replacement cost* to repair or rebuild *your home* if we are satisfied that *you* will incur that cost within **12** months. If we choose this option we will agree with *you* the terms on which *you* will provide *us* with security for *our* payment to *you* until the cost is incurred;
- › allow *you* to build a home at a different location and pay *you* up to the *replacement cost* after *you* have incurred it, but we will not pay for any additional costs associated with building at that location, or for the cost of land. If we choose this option, building must be completed within **12** months (unless we agree in writing to extend the time period) and we will have the right to inspect the building works at any time, to be fully informed about the works, and to inspect any relevant document;
- › pay up to the *replacement cost* to assist *you* in purchasing an established home elsewhere within **12** months provided we can agree with *you* the terms on which *you* will provide *us* with security for *our* payment to *you* until the purchase is completed;

- › pay you the *home sum insured* for your *home*;
- › pay you the *indemnity value* where you do not intend to repair or rebuild your *home* within **12** months, unless we agree in writing to extend that time;
- › pay any part of the *replacement cost* or *indemnity value* to any mortgagee or other party with a secured financial interest in the *home*, and settle your claim by choosing one of the other settlement options in this section;
- › give you a voucher, store credit or stored value card for the amount it would cost us to repair or rebuild an item.

We may deduct any amounts you owe us from any amount we owe you. Regardless of which of the above settlement options we choose, we will never pay more than the *home sum insured*, plus any additional benefit limits which are specified in this *policy* to be paid in addition to the *home sum insured*.

## We choose how we settle contents claims

If we agree to pay a claim for *loss or damage* to your *contents*, we will decide if we will:

- › repair damage to your *contents*;
- › replace your *contents* to the 'new for old' condition;
- › pay you what it would cost us to repair or replace your *contents* or any lower limit that applies;
- › pay you the *general contents sum insured* or any lower limit that applies;
- › give you a voucher, store credit or stored value card for the amount it would cost us to repair or replace your *contents*.

If we replace (or pay you what it would cost us to replace), we will do so to the 'new for old' condition.

If we repair (or pay you what it would cost us to repair), this will at our option be to the 'new for old' condition or repair to a similar condition to what your *contents* were in before the *loss or damage* occurred.

We may deduct any amounts you owe us from any amount we owe you.

## We will not:

- › pay more than the relevant sum insured or policy limit;
- › pay extra to repair or replace your *home* or *contents* to a better standard, specification or quality than it was before the *loss or damage* occurred except as stated in the meaning of 'new for old' condition;
- › pay for any additional costs or fees required for your *home* to comply with any heritage order or covenant that applies to your *home* or costs associated with your *home* being considered or declared an archaeological site;
- › fix a fault that existed before the *loss or damage* occurred;
- › pay any decrease in the value of a pair, set or collection when the *lost or damaged* item forms part of a pair, set or collection. We pay only for the repair or replacement of the item which was *lost or damaged*.

## 'New for old' condition means:

We rebuild, replace or repair:

- › with new items or new materials that are readily available at the time of replacement or repair from New Zealand suppliers;
- › in the case of your *home*, the materials and techniques used are the current equivalents to those used when your *home* was new or last enhanced; and
- › to the condition that is not better or more extensive than the condition the *home* or the item was in when it was new or last enhanced, with no allowance for depreciation.

## 'New for old' condition does not mean:

- › paying the extra cost of replacing or purchasing an extended warranty on any item;
- › of a better standard, specification or quality than the *home* or the item was when it was new or last enhanced; or
- › that heritage features in *your home* will be replicated if it is not possible to do this easily using equivalent techniques and/or building materials that are readily available in New Zealand.

## 'New for old' condition for certain items

### Obsolete electrical appliances

For obsolete electrical appliances such as outdated computers or TVs, '*new for old*' condition means replacing or repairing to an equal specification (but not brand). If this is not available, it means to the nearest better specification available. It can be a different brand. We do not insure electrical or electronic items that are no longer able to be used for the purpose they were intended.

Paintings, pictures, works of art, sculptures, ornaments, art objects, collections, sets and memorabilia and antiques (not jewellery)

For these items, '*new for old*' condition means that if the item cannot be replaced with a new item or repaired, we will pay you what it would have cost to buy the item immediately before the *loss or damage* occurred.

## HOME CLAIMS

This section relates specifically to a claim made on *your home policy* and is in addition to the information in 'How we settle your claim'.

If we choose to settle *your* claim by paying you the cost of repairing or rebuilding *your home*, the amount we pay will be calculated on the basis of the costs we would have met if we were repairing or rebuilding *your home*, as set out in this section.

## When we authorise repairs or rebuilding of your home

If we need to source material in order to repair or rebuild *your home*, we will do our best to obtain new materials that are the same type, standard and specification as those that have been *lost or damaged*. If the same materials are not available, we will use materials of a similar type, standard and specification that are readily commercially available and compliant with current building regulations. If the exact materials used in *your home* are no longer used in building modern homes and there is a current equivalent material which serves the same function and provides no obvious difference in appearance, we will use the current equivalent material.

We may enter into any building contract with the selected repairer and/or supplier on *your* behalf. If we do this, we will oversee the repairs and keep you informed of their progress.

## When we cannot match materials

If we cannot find materials to match undamaged parts, we will use the closest match available to us.

If you are not satisfied with the materials we find as the closest match before we repair *your home*:

- › if we agree, you can pay the extra cost of replacing undamaged parts of *your home* to achieve a uniform appearance; or
- › we will pay you what it would have cost us to repair or rebuild the *damaged* part.



## Repairing or rebuilding damaged parts

We will only repair or rebuild (or pay to repair or rebuild) the parts that are *damaged* in the *event* covered by *your policy*. You cannot claim to replace undamaged parts of *your home* to create a uniform appearance. Examples of when we will not replace undamaged parts are when:

› **one garage door is damaged**

We will only replace or repair the *damaged* one, not other doors.

› **roof tiles are damaged**

We will only replace the *damaged* ones, not the undamaged tiles, even if the undamaged tiles are faded and do not match the new ones used for repairs.

› **roof sheeting is damaged**

We will only replace the *damaged* roof sheeting, not the undamaged roof sheeting, even if the closest match available to us is a different shade or colour to the undamaged roof sheeting.

› **an external wall is damaged**

We will replace the *damaged* parts of the wall, not undamaged areas of the wall or other sides of *your home*.

These examples are not an exhaustive list of the times when we will not replace undamaged parts. For the limited circumstances when we will replace undamaged parts, see the next section.

## When we will repair or rebuild undamaged parts

If we cannot match the new materials with the undamaged parts, we will only pay extra to create a uniform appearance when:

› **internal wall tiles are damaged**

We will replace undamaged wall tiles in the same room, stairs, hallway or passageway\* so they match or complement new tiles used for repairs.

› **other internal wall coverings are damaged** (e.g. paint, wallpaper, wood panels, but not tiles)

We will pay extra to paint, wallpaper or replace undamaged wall coverings in the same room, stairs, hallway or passageway\* where the damage occurred.

› **internal floor coverings are damaged (including tiles)**

We will pay extra to replace continuously joined undamaged floor coverings of the same material in the same room, stairs, hallway or passageway\* where the damage occurred.

› **kitchen cabinets, cupboards or benchtops are damaged**

see 'Repairing or replacing kitchen cabinets, cupboards or benchtops'.

\*See 'What we mean by same room, stairs, hallway or passageway'.

## Repairing or replacing kitchen cabinets, cupboards or benchtops

### We will repair damaged parts of your kitchen

We will pay to repair the *damaged* parts of your kitchen cabinets, cupboards or benchtops.

### When we will replace undamaged parts of the kitchen

To create a uniform appearance, we will pay extra to replace undamaged parts of the same cabinet, cupboard or benchtop so that they match the repaired parts.

### Same cabinet, cupboard or benchtop means:

- › those parts continuously joined to the *damaged* parts (this is one 'section');
- › made out of the same materials; and
- › on the same level.

Sometimes replacing the benchtop, door fronts or drawers in the undamaged area is all that is necessary to create a uniform appearance. We will decide what is necessary depending on the circumstances.

## What we mean by same room, stairs, hallway or passageway

### Same room

A room is an area starting and finishing at:

- › its nearest walls;
- › nearest doorway, archway or similar opening of any width;
- › a change in the floor or wall covering.

A hallway next to a room is not the same room, even if it has the same floor or wall covering as the room.

Any archway or similar opening separates a room unless it is a combined lounge-dining room.

### Combined lounge-dining room

We will only combine rooms with a shared doorway, archway or similar opening when:

- › they are lounge and dining rooms; and
- › the shared doorway, archway or similar opening is wider than 82cm; and
- › the floor or wall covering is the same in both rooms.

### Open plan areas

When there is no wall, archway, doorway or similar opening, the room continues until:

- › a change in the floor or wall covering;
- › the nearest wall, doorway, archway or similar opening.

### Same passageway or hallway

A passageway or hallway has the same meaning as a room. We will not combine a hallway and a room.

## Changes to your home

### If you want to change the design of your home

When repairing or rebuilding *your home*, if we agree, you can choose to change the design of *your home* or upgrade parts of it, providing you pay the extra costs of doing this. If you want to downsize *your home* for less cost than you are entitled to claim, we will not pay more than it costs us to rebuild the downsized home.

### Choosing to rebuild on another site

If *your home* is to be rebuilt following an event covered by *your policy* you can choose to have *your home* rebuilt on another site providing you pay any extra costs involved. We do not pay the costs of purchasing the land at the other site.

## Lifetime guarantee on home repairs

When we repair or rebuild *your home*, we guarantee the quality of materials and workmanship of that work for the lifetime of *your home* while *you* own it if we:

- › authorise;
- › arrange; and
- › pay the builder or repairer directly for this work.

### What we guarantee

We guarantee that the material used and standard of the workmanship at the time of repairs or rebuilding will be free of defects. If a defect arises in the lifetime of *your home* and while *you* are the owner of *your home* as a result of poor quality workmanship or use of incorrect materials, taking into account the relevant building standards and materials used at the time of repair or rebuilding, then we will rectify the problem. This guarantee cannot be assigned to any other person or entity.

### This guarantee does not apply:

- › to repairs *you* authorise or make yourself;
- › to *loss or damage* to or failure of any electrical or mechanical appliances or machines;
- › to wear and tear consistent with normal gradual deterioration of *your home* (e.g. paint peeling off after its expected life cycle, wood rotting from moisture in the air or ground, roofs weathering or a hot water tank leaking after its guaranteed life);
- › where we agree with a repair quote and we give *you*, or the builder or repairer, payment for the cost of the repairs and *you* arrange the repairs.

## CONTENTS CLAIMS

This section relates specifically to a claim made on *your contents policy* and is in addition to the information in 'How we settle your claim'.

### When we repair or replace your contents

If we choose to repair damage to *your contents* or replace *your contents*, we will repair or replace with items or materials that are reasonably available at the time of repair or replacement from New Zealand suppliers.

We will do *our* best to replace to the same type, standard and specification (but not brand) as when the *contents* were new or last enhanced. If the same is not available, we will replace with items or materials of a similar type, standard and specification when new.

### When we cannot match contents items

If we cannot find a *contents* item match we will use the closest match reasonably available to *us*.

If *you* are not satisfied with what we choose before we repair the *contents*:

- › if we agree, *you* can pay the extra cost of replacing other parts of *your contents* to achieve a uniform appearance; or
- › we will pay *you* what it would have cost *us* to repair, but only if we agree to this.

## Items that form part of a set or collection

We will only repair or replace *contents* that are *lost or damaged* by an event covered by your *policy*. You cannot claim to replace undamaged parts of the *contents* (e.g. when a lounge chair which is part of a suite is *damaged* beyond repair, we will pay to replace that chair, not the whole lounge suite).

## When we will repair or replace undamaged contents

We will only repair or replace *contents* that are *lost or damaged* by an *insured event*. You cannot claim to replace undamaged *contents* or undamaged parts of *contents*.

But there are limited circumstances where we will repair undamaged parts of *contents* to create a uniform appearance. These are:

- ▶ **internal blinds and curtains**  
if we can't match the new material or parts with the undamaged ones, if necessary, we will pay extra to replace undamaged blinds and curtains in the same room, stairs, hallway or passageway\* where the damage occurred.
- ▶ **loosely laid carpets or other floor coverings**  
if we can't match the new material or parts with the undamaged ones, if necessary, we will pay extra to replace undamaged loosely laid carpets and other *contents* floor coverings in the same room, stairs, hallway or passageway\* where the damage occurred.

\*See the explanation earlier in this *policy* for 'What we mean by same room, stairs, hallway or passageway'.

## If you want to change the contents

When repairing or replacing the *contents*, if we agree, *you* can choose to change the make and model of the *contents* item or upgrade to a different make and model of it, providing *you* pay the extra costs of doing this. If *you* want to downsize the *contents* item for less cost than *you* are entitled to claim, we will not pay more than it costs *us* to repair or replace the downsized *contents* item.

## OTHER CLAIMS INFORMATION

### Potential impact on cover and premiums

#### After a home claim

If we only pay part of the *home sum insured* to *you*, your *home policy* continues for the *period of insurance*. The amount of cover available for future claims will be reduced from the *home sum insured* stated on your *policy schedule* by the amount of the *loss or damage* to your *home*. The amount of cover shall be restored as and to the extent that the *loss or damage* to your *home* is repaired or rebuilt. This includes where your *policy* has been renewed before *you* have repaired or rebuilt the *loss or damage*. Before the amount of cover is restored, *you* must pay any additional premium we may charge. The amount of cover will be increased back to the amount stated on the *policy schedule* only once during the *period of insurance*, unless we confirm in writing that we will increase it more than once.

If we pay the full *home sum insured* to *you*, all cover under your *home policy* ceases. There is no refund of premium. If *you* have been paying premiums by instalments, *you* must pay the rest of the remaining unpaid instalments for the *period of insurance*.

### **After a general contents claim**

If we pay part of, or the full *general contents sum insured*, the amount of cover available for future claims will be reduced from the *general contents sum insured* stated on *your policy schedule* by the amount of the *loss or damage* to *your contents*. The amount of cover shall be restored as and to the extent that the *loss or damage* to *your contents* is repaired or the item replaced. This includes where *your policy* has been renewed before you have repaired or replaced *your contents*. The cover for *your contents* continues for the *period of insurance* at no extra cost. You should reassess *your general contents sum insured* after a general contents claim. There is no refund of premium if *your general contents sum insured* is reduced by the amount of *your claim*.

### **After claiming for specified items**

If we pay you the sum insured for a *specified item* of *your contents*, or pay to replace it, cover for that item ceases and there is no refund of unused premium. If you want to cover any new replacement item as a *specified item*, you will need to contact us and apply for cover for the new item. We may charge you additional premium to cover the new replacement item.

## Salvaged home and contents items

If we replace or compensate you for an item of *contents* or part of *your home*, we then own the *damaged* or recovered item or part. If we agree you can keep an item or part we will determine the salvage value and we can deduct this amount from any payment we make to you.

## Our right to recover claims we pay from those responsible

After we pay a claim under this *policy*, we can decide to take legal action in *your name* to recover money from the person or entity which caused the *loss or damage* or liability. You must give us all the help we need to do this. If we recover money which exceeds the amount we have paid you or was not part of the claim we paid, we will give this to you. However, where you receive a payment, we may ask you to contribute on a pro-rata basis to the costs that we have incurred in recovering the money.

# 4. OTHER IMPORTANT INFORMATION

## WHAT HAPPENS WITH CANCELLATIONS?

### Cancellation by you

*You may cancel this policy at any time. If you cancel this policy, you will be refunded the unexpired portion of the premium, if the refund is more than \$10. The cancellation will take effect from the time that we receive your request to cancel.*

### Cancellation by us

*We can cancel your cover by giving you notice of cancellation. This cancellation will take effect 7 days after we advise you of the cancellation. Where we cancel with notice, you will receive a refund of the unexpired portion of the premium if the refund is more than \$10.*

Where:

- › *you do not provide honest, accurate or complete information in relation to a claim, including in a statement given to our agents, in a claim form or another document, or where you omit to tell us something; or*

- › *you are fraudulent in making your claim, or you exaggerate your loss or damage;*

*we can cancel your policy back to the time that you gave the fraudulent, inaccurate, incomplete or exaggerated information, refuse to pay any claim and recover any money paid since that time.*

*If you breach your duty of disclosure by failing to give honest, accurate or complete answers to our questions or by failing to provide information that is relevant or material to our decision to enter into this policy with you, we can avoid this policy from the start date and your policy will be treated as if it had never existed. This may mean that you have to refund to us any claims that we have already paid you.*

*For more information about cancellation see 'Paying your premium'.*

## WORDS WITH SPECIAL MEANINGS

### business activity

means any activity specifically undertaken for the purposes of earning an income, whether or not *you*:

- › are a sole trader, a trust, or an incorporated business;
- › are registered with Inland Revenue or with the Companies Office;
- › pay tax to Inland Revenue on the income derived from such activity.

### collection

means a set of objects, specimens, writings, and the like, gathered together and which collectively have a special value above that of the items individually if separated.

### common property

means land or areas at the *insured address* that both *you* and other people are entitled to use at a *unit* or strata title development.

### contents

has the meaning given under 'What we cover as your contents' on page 10.

### damaged

means sudden physical damage from an *event*.

### destroyed

means that the *home* is so damaged that it would not be reasonably practicable to repair the *home*.

### drone

means an unmanned, unpiloted or remotely operated aerial vehicle (including associated equipment required to operate it, and any recording equipment attached to it) capable of being controlled:

- › autonomously by a computer; or
- › by a person, when it is outside of the person's visual line of sight.

### environmental improvements

means an alteration or addition to *your home* which is intended to contribute to the protection or conservation of the environment. These may include, but are not limited to, items such as solar panels, rainwater tanks or compost equipment.

### event

means a single incidence, accident or occurrence which *you* did not intend or expect to happen.

### family

has the meaning given under 'Who we cover – you/your' on page 7.

### fixtures and fittings

means items used for domestic and residential purposes and which are permanently attached to *your home*.

### flood

means the inundation of land by water escaping from or released from the normal confines of the sea, any watercourse, reservoir, pond, dam, or lake, as well as the runoff, accumulation, or pooling of water. However, flood does not include inundation of land where it affects only *your* property.

### general contents sum insured

means the amount stated on *your* latest *policy schedule* for general *contents*.

### home

has the meaning given under 'What we cover as your home' on page 7.

### home office equipment

means any office equipment kept at *your home* for personal or business use and which is of a clerical nature only.

### home sum insured

means the amount stated on *your latest policy schedule* for home sum insured.

### indemnity value

means *our* option of:

- › the *market value*;
- › the depreciated *replacement cost* as assessed by an independent registered valuer; or
- › the cost of repairs, less wear and tear and depreciation, but including the cost of complying with government or local authority by-laws or regulations to the extent this cost would be covered by this *policy* if the *home* had been repaired.

### insured address

has the meaning given under 'Where we cover – the insured address' on page 7.

### insured event

means an *event* not excluded by this *policy*.

### loss or damage (including lost or damaged)

means sudden physical loss or sudden physical damage from an *event*.

### market value

means the market value of *your home* excluding land, immediately prior to the *loss or damage*, as determined by an independent registered valuer.

### memorabilia

means things saved or collected as souvenirs and/or for their historical interest.

### natural disaster

means earthquake, *natural landslip*, volcanic eruption or activity, hydrothermal activity, tsunami or fire resulting from any of these. It does not include any gradual or slow movement of land.

### natural landslip

means the sudden movement (whether by way of falling, sliding, or flowing, or by a combination of these) of ground-forming materials composed of natural rock, soil, artificial fill, or a combination of such materials, which, before movement, formed an integral part of the ground, but does not include any gradual or slow movement of these materials.

### 'new for old' condition

has the meaning given under "New for old' condition means' and "New for old' condition does not mean' on page 45.

### open air

means any area at the *insured address* not able to be enclosed on all sides and secured in such a way as to prevent access except by violent force.

### period of insurance

means when *your policy* starts to when it ends. It is shown on *your policy schedule*.

### policy

means *your* insurance contract.

### policy schedule

means the policy schedule *we* have given *you*. It is an important document as it shows the covers *you* have chosen and other *policy* details.



### replacement cost

means the cost reasonably required to, at *our* option:

- › repair the *damaged* portion of the *home* to the 'new for old' condition;
- › repair the *damaged* portion of the *home* to a similar condition to what *your home* was in before the *loss or damage* occurred; or
- › rebuild the home to the 'new for old' condition.

This cost is calculated at the time of the *loss or damage* giving rise to a claim under this *policy*. It does not include any cost which is not covered by this *policy*, unless the only reason the cost is not covered is because the *home sum insured* has been exceeded.

### residential boundaries

means that part of the land on which the dwelling which constitutes *your home* is situated, which is used by *you*, by members of *your family*, or by *your* tenant, for predominantly domestic purposes. It does not include:

- › any part of the land which is used for commercial or farming purposes;
- › any part of the land that is more than 150 metres away from a dwelling or garage used for domestic purposes, and where the *home* is situated on a property greater than 10,000 square metres in size, and is not serviced by a dedicated town mains water supply.

### retaining wall

means a wall, which is not part of *your* residential *home*, that holds back or prevents the movement of earth.

### set

means a number of things customarily used together or forming a complete assortment, outfit, or collection such as a set of dishes.

### specified items

means the items that are listed on *your policy schedule* as specified items.

### storm

means a storm, cyclone or severe atmospheric disturbance. It can be accompanied by strong winds, rain, lightning, hail, snow or dust.

### tools of trade

means tools or equipment used for any *business activity* (but not *home office equipment*).

### unit

means unit, villa, townhouse or apartment in a unit or strata title development or cross-lease development. It does not include *common property*.

### unliveable

means the *home* is no longer a safe and sanitary place to live, as determined by government or local authorities, or by *us*, due to physical damage to the *home*, and where notice to this effect has been issued. It does not mean a disinclination by *you* to remain in occupancy of an otherwise safe or sanitary *home*.

### unoccupied and occupied

unoccupied means:

- › *your home* is not furnished enough to be lived in; or
- › no-one is eating, sleeping and living at *your home* with *your* permission; or
- › *your home* is not connected to utilities.

occupied means:

- › *your home* is furnished enough to be lived in; and
- › someone is eating, sleeping and living at *your home* with *your* permission; and
- › *your home* is connected to utilities.

furnished enough to be lived in means *your home* contains at least:

- › a bed; and
- › a clothes and linen storage area; and
- › an eating table or bench; and
- › a refrigerator and a cooking appliance.

well maintained and in good condition

means *your home* and *contents* do not have any faults or defects that might cause *loss or damage* to *your home* and *contents*, or *loss or damage* to property of others. This includes but is not limited to the following:

- › the roof does not leak when it rains;
- › there are no areas of the roof that are rusted through;
- › there is no wood rot in *your home*;
- › there are no holes in floors, walls, ceilings or any other parts of *your home* (e.g. external wall cladding, internal plaster, floorboards);
- › there are no boarded up or broken windows;
- › there are no steps, gutters, flooring, walls, ceilings or any other areas of *your home* that are loose, falling down, missing or rusted through;
- › all previous damage including damage caused by any previous *insured event* has been repaired;
- › *your home* is not infested with vermin;
- › there are no squatters or unauthorised persons occupying *your home*.

we, our and us

means Vero Insurance New Zealand Limited.

you, your

has the meaning given under 'Who we cover – you/your' on page 7.

## HOW WE WILL DEAL WITH A COMPLAINT

If *you* are not satisfied with *our* products or services or a decision made in relation to *your* insurance, please let *us* know so that *we* can help. *We* take all customer feedback seriously and would like the opportunity to resolve any issues. *We* have a complaints process that *we* will follow when *you* contact *us* about a complaint. Please refer to *your* policy documentation for details on how to contact *us*.



VOPHEP 11/15

[warehousemoney.co.nz](http://warehousemoney.co.nz)

This insurance policy is underwritten by  
Vero Insurance New Zealand Limited.

**Warehouse**  
**Money**