

LIVING & CO[®]

7 fin Oil Column Heater

1900W



INSTRUCTION MANUAL
LOH19007W

AFTER SALES SUPPORT

  0800 422 274

Contents

- 03 SAFETY INSTRUCTIONS
- 05 ASSEMBLY INSTRUCTIONS
- 06 INSTRUCTIONS FOR USE
- 07 MAINTENANCE
- 08 WARRANTY

SAFETY INSTRUCTIONS

IMPORTANT: Read these instructions fully before using the heater. Retain these instructions for future reference.

1. This appliance is not intended for use by persons (including children) with reduced physical, sensory or mental capabilities, or lack of experience and knowledge, unless they have been given supervision or instruction concerning use of the appliance by a person responsible for their safety.
2. Children should be supervised to ensure that they do not play with the appliance.
3. The product is for household use only.
4. Connect the appliance to single phase AC supply of the voltage specified on the rating plate.
5. Warning: In order to avoid overheating, do not cover the heater.
6. Never leave the heater unattended while it is in use. Always turn the product to the OFF position and unplug it from the electrical outlet when not in use.
7. Extreme caution is necessary when any heater is used by or near children, invalids or elderly person and whenever the heater is left operating and unattended.
8. The heater must not be located immediately below an electrical socket-outlet.
9. Do not run cord under carpeting and do not cover cord with throw rugs, runners or the like. Arrange cord away from traffic area and where it will not be tripped over.
10. Do not operate the heater with a damaged cord or plug, or after the heater malfunctions, has been dropped, or damaged in any manner.
11. If the supply cord is damaged, it must be replaced by the manufacturer or its service agent or a similarly qualified person to avoid a hazard.
12. Avoid the use of an extension cord as this may overheat and cause a risk of fire.
13. Use the heater in a well-ventilated area. Do not insert or allow objects to enter any ventilation or exhaust opening. To prevent a possible fire, do not block air intakes or exhaust openings in any manner. Do not use on soft surfaces, like a bed, where openings may become blocked. Use the heater on flat, dry surfaces only.

SAFETY INSTRUCTIONS

14. Do not place this heater near flammable materials, surfaces or substances, as there may be a risk of fire. Keep the above flammable materials, surfaces or substances at least 1m from the front of the product and keep them away from the sides and rear.
15. Do not use the heater in any areas where petrol, paint or other flammable liquids are stored e.g. garages or workshops as there are hot, arcing, or sparking parts inside the heater.
16. Don't use this heater in the immediate surroundings of a bath, a shower or a swimming pool. Never locate the heater where it may fall into bathtub or other water container.
17. This heater is hot when in use. To avoid burns and personal injury, do not let bare skin touch hot surfaces. If provided, use handles when moving the product.
18. Be sure that no other appliances are in use on the same electrical circuit as your product as an overload can occur.
19. This heater is filled with a precise quantity of special oil.
20. Repairs requiring opening of the oil container are only to be made by the manufacturer or his service agent who should be contacted if there is an oil leakage.
21. Regulations concerning the disposal of oil when scrapping the appliance have to be followed.
22. The cord shouldn't be placed near the hot surfaces of the appliance.
23. NOTE: It is normal when the heaters are turned on for the first time, or when they are turned on after having not been used for a long period of time, that the heaters may emit some smell and fumes, This will disappear when the heater has been on a short while.
24. Never operate the appliance with wet hands
25. For additional safety, it's recommended that this heater is always used on an outlet fitted with a residual current device (RCD) with a rated operating residual current not exceeding 30mA.

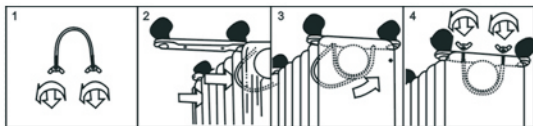
ASSEMBLY INSTRUCTIONS



1. Thermostat knob
2. Power switch (with indicator light)
3. Timer switch
4. Fan switch
5. Cord storage
6. Radiant fins
7. Castor Wheels
8. Turbo Fan air outlet

The heater is packaged with the feet unattached. You must attach them before operating the heater.

WARNING: Do not operate without feet attached. Do operate the heater only in upright position (feet on the bottom, controls on the top), any other position could create a hazardous situation.



1. Place the radiator body upside-down on a scratch-free location, make sure it is stable and will not fall.
2. Screw off the wing nuts from the U-shaped bolt provided, attach the U-shaped bolt to the U-facing flange between first and second fins (near the front cover).
3. To attach the castor mounting plate to the radiator body, you should insert the threaded ends of the U bolt in the holes on the castor mounting plate.

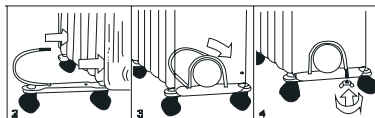
4. Screw the wing nuts back to the U bolt and fasten the wing nut properly.

Note: do not over tighten, which may cause the damage of radiator flange.

5. Screw off spherical nut from the castor, align the shaft to the hole of the castor mounting plate, insert in, and screw on the spherical nut.

6. Repeat 2, 3, 4 and 5 on the rear of radiator for mounting of the rear castors.

Note: the rear castors must be mounted between the end two fins.



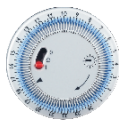
INSTRUCTIONS FOR USE

INSTRUCTIONS FOR USE

1. Before using the heater, make sure that it is on a flat and stable surface, damage may occur if it is placed on an inclined surface.
2. Set all the controls to OFF position and insert the plug into an earthed wall socket. It is recommended that this heater is always used on an outlet fitted with a residual current device (RCD) with a rated operating residual current not exceeding 30mA. Be sure that plug fits firmly.
3. Rotate the thermostat knob clockwise to MAX position and switch the heater on: position I for low heat, position II for medium heat and both switches on for high heat. (ensure Timer switch is set to "I").
4. When your room reaches the desired temperature, slowly rotate the thermostat knob counter clockwise until the indicator light goes out. The thermostat can now be left at this setting. As soon as the room temperature has dropped below the set temperature, the unit will switch itself on automatically until the set temperature has been reached again. In this way the room temperature remains constant with the most economical use of electricity.
5. If you want to change the room temperature setting, rotate the thermostat knob clockwise to raise the temperature, or counter-clockwise to lower it.
6. This heater includes an overheat protection system that shuts off the heater when parts of the heater are getting excessively hot.
7. To completely shut the heater off, turn all the controls to OFF, and remove plug from the socket-outlet.

USING THE TIMER

1. The timer is a 24 hour clock, and is initially set when plugged in by turning the dial clockwise to align the time with the arrow on the face of the timer center dial.
2. The timer has a small switch. The function is as follows:
 - I - Heater is always ON;
 - O - Heater is controlled by Timer.
3. Set the timer to O position. There are 96 small plastic pins on the timer, each corresponding to a 15 minute interval. Push outward on the pins corresponding to the time you want the heater to turn ON and push inward on the pins corresponding to the time you want the heater to turn OFF.



CAUTION:

1. Do not use the timer function while the heater is unattended.
2. The heater will not operate if timer is set to the O position and the pins are not activated according to the times required.
3. If the heater loses its electricity supply, e.g. switched off at the mains socket or in the event of a power failure, the timer must be reset when the power turns on again.
4. The indicator light will be on when the timer is set to ON position or the timing function is activated.

USING THE TURBO FAN

For immediate heat while the oil heater's temperature rises you can use the turbo fan/heat function. This generates heat from an internal ceramic heating module. Switch ON or OFF as required. NOTE: This is a separate heating device and not a fan forced function of the radiator.

MAINTENANCE

CLEANING THE HEATER

Always unplug the heater from the wall socket and allow to cool down before cleaning.

WARNING:

Do not immerse the heater in water.

Do not use any cleaning chemicals such as detergents and abrasives.

Do not allow the interior to get wet as this could create a hazard.

1. Clean the outside of the heater by wiping with a damp cloth and buffing with a dry cloth.
2. To store the heater, wrap the cord around the cable bobbin and store in a cool dry place.
3. In case of malfunction, do not try to repair the heater yourself. This may result in a fire hazard or electric shock.

SPECIFICATION

220 - 240Vac 50Hz

1900 Watts

Responsible Disposal

At the end of its working life, do not throw this product out with your household rubbish. Electrical and electronic products contain substances that can have a detrimental effect on the environment and human health if disposed of inappropriately. Observe any local regulations regarding the disposal of electrical consumer goods and dispose of it appropriately for recycling. Contact your local authorities for advice on recycling facilities in your area.

Please keep the original packaging carton and materials in a safe place. It will help to prevent any damage if the product needs to be transported in the future. In the event it is to be disposed of, please recycle all packaging material where possible



LIVING & CO[®]

Warranty

We pride ourselves on producing a range of quality home appliances that are both packed with features and completely reliable. We are so confident in our products, we back them up with a 3 years warranty.

Now you too can relax knowing that you are covered.

Customer Helpline NZ: 0800 422 274

This Product is covered by 3 years warranty when accompanied by proof of purchase.

IM Version 1.0 - September 2017